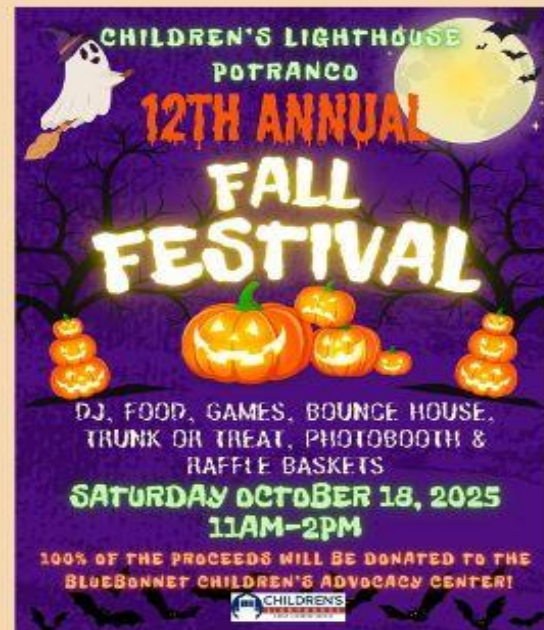


# OCTOBER NEWSLETTER



**FALL FEST WRISTBANDS ARE  
READY FOR PURCHASE.  
\$10 EACH OR 4 FOR \$35**



# INFANT CURRICULUM

## OCTOBER



THEME: MY HOME  
SIGN LANGUAGE: HOUSE  
SHAPE: "SQUARE"

SONG: "HOME ON THE RANGE"

COLOR: ORANGE

RHYMES/FINGERPLAY: "THIS LITTLE PIGGY"



# Happy Halloween

May your Halloween be sweet and spooky!



# Toddler Curriculum

## OCTOBER

THEME: MY HOME

SIGN LANGUAGE: HOUSE

SHAPE: "SQUARE"

SONG: "HOME ON THE RANGE"

COLOR: ORANGE

RHYMES/FINGERPLAY: "THIS LITTLE PIGGY"







# October 2025

## MONTHLY EVENTS

SUN	MON	TUE	WED	THU	FRI	SAT
			1 <b>PINKOUT</b> 	2 <b>SPOOKY HAIR/HAT DAY</b>	3 <b>PAJAMA-WEEN</b>	4
5 <b>WORLD TEACHER'S DAY</b>	6 <b>"MONSTERS INC." DAY</b>	7 <b>"NIGHTMARE BEFORE CHRISTMAS" DAY</b>	8 <b>PINKOUT</b> 	9 <b>"HARRY POTTER" DAY</b>	10 <b>SPOOKY GEAR</b>	11
12	13 	14 <b>TIM BURTON DAY</b>	15 <b>PINKOUT</b> 	16 <b>"HOCUS POCUS" DAY</b>	17 <b>PAJAMA-WEEN</b>	18 <i>FALL festival</i>
19	20 <b>MONSTER MASH MONDAY</b>	21 <b>CAMOUFLAGE DAY</b>	22 <b>PINKOUT</b> 	23 <b>HALLOWEEN COLORS DAY</b>	24  <b>BOO DAY</b>	25
26	27 <b>MOVIE MONDAY</b>	28 <b>NEON DAY</b>	29 <b>PINKOUT</b> 	30 <b>THROWBACK THURSDAY</b>	31 <b>HALLOWEEN COSTUMES</b> <i>HAPPY HALLOWEEN</i>	



# MONTHLY DRESS UP

**ON WEDNESDAY'S WE WEAR PINK: PINK OUT FOR  
BREAST CANCER AWARENESS**

**THURSDAY 10/2: SPOOKY HAIR/HAT DAY**

**FRIDAY 10/3: PAJAMA-WEEN**

**MONDAY 10/6: MONSTERS INC DAY**

**TUESDAY 10/7: NIGHTMARE BEFORE CHRISTMAS**

**THURSDAY 10/9: HARRY POTTER DAY**

**FRIDAY 10/10: SPOOKY GEAR**

**TUESDAY 10/14: TIM BURTON DAY**

**DRESS AS YOUR FAVORITE TIM BURTON CHARACTER**

**THURSDAY 10/16: HOCUS POCUS DAY**

**FRIDAY 10/17: PAJAMA-WEEN**

**MONDAY 10/20: MONSTER MASH MONDAY**

**DRESS AS YOUR FAVORITE HALLOWEEN MONSTER  
(NO WEAPONS OR MASK)**

**TUESDAY 10/21: CAMOUFLAGE DAY**

**THURSDAY 10/23: HALLOWEEN COLORS DAY**

**FRIDAY 10/24: BOO DAY**

**WEAR A GHOST SHIRT**

**MONDAY 10/27: MOVIE MONDAY**

**DRESS AS YOUR FAVORITE MOVIE CHARACTER**

**TUESDAY 10/28: NEON DAY**

**THURSDAY 10/30: THROWBACK THURSDAY**

**FRIDAY 10/31: HAPPY HALLOWEEN**

**COSTUMES CAN BE WORN**

**PLEASE NO WEAPONS, MASK OR CAPES**





# C.A.R.E.S CURRICULUM

OCTOBER

CHARACTER VALUE: "HELPLESSNESS"

CHARACTER VALUE FRIEND: "BALA THE  
BEAVER"

THEME: "OUR COMMUNITY"

SCIENCE & NATURE: "NOCTURNAL ANIMALS"

SPECIAL DAYS: "INDIGENOUS PEOPLE DAY,  
HALLOWEEN"



# MONTHLY RECOGNITION

**OCTOBER  
EMPLOYEE OF  
THE MONTH!**

**MS. VERONICA**



## STAFF BIRTHDAY'S

**MS. ANGELINA 10/1**

**MS. MARISSA 10/2**

**MS. MEGAN 10/2**

**MRS. BRIDGET 10/23**





# OCTOBER

**COMMUNITY CHALLENGE: EYES ON THE WORLD**

**CHARACTER VALUE: "HELPLEFULNESS"**

**TEAM: "CODE BREAKERS"**

**"ART STORIES"**

**"MYSTERY BOX"**

**"GROUP MOSAIC"**

**"NOT SO SCARY SCARECROWS"**

**SOLO: HOW MANY DROPS?**

**"O WHAT A CREATION"**

**"SKETCH JOURNALS"**

**"KNUCKLE BONES"**

**"TESTING SOUND WAVES"**

**OUTDOOR: "PIN BUILDERS"**

**"KANGAROO CHASE"**

**"LAUNCHERS KEEPERS"**

**"TAP TAG"**

**"WAITER, WAITER"**

