



Lighthouse Beacon

November 2025



Director's Corner

We are so thankful for all our wonderful Children's Lighthouse families this holiday season. Thank you for helping to make our annual Fall Festival fun and memorable. We truly appreciate and enjoy your participation in our activities and events.

We have seen so much growth in our students since the beginning of the school year and cannot wait to share their progress with you. Be on the lookout for portfolio assessments to come out at the end of the month for our CARES classrooms.

As your family is planning for the holidays, please remember that if you would like to use an absentee credit this season your absentee credit form must be turned in with your tuition payment prior to your child's absence. We hope that you enjoy the extra time with family and friends.

As always, feel free to email or call with any questions or comments you may have.

-Julie Gibbons



Caleb T. 11/4
Sandra W. 11/4
Brayden S. 11/7
Marcello C. 11/7
Claire P. 11/12
Drew P. 11/15
Riley T. 11/20
Morgan P. 11/22
Brooke V. 11/22
Clementine T. 11/23
Jaxon O. 11/26



Food Drive

November 3rd – November 26th

We will be collecting non-perishable food items for the San Antonio Food Bank.

There will be a collection bin in our lobby area where you can drop off your donations. Thank you for helping to fight hunger!



caitlin's.creations **photography.design**

Santa Picture Day is coming up, and we are looking forward to seeing all your holiday smiles!

Thursday 11/4 (rooms 1-5 + siblings)
Friday 11/5 (rooms 6-9)



HOLIDAY PROGRAM

Our Annual Holiday Program is scheduled for 12/18/2025 starting at **3:30pm.**

Each classroom will put on a short performance, and we hope that you will be able to join us.

Check your email for invitation and additional details.



Below is a breakdown of the monthly focus. To continue the extension of learning at home you can practice using the sign language and pointing out the colors and shapes in your child's world.

Rooms 1, 2, & 3

Theme: Food, Food, Food

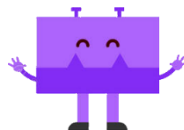
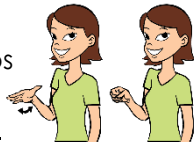
Sign: Milk

Shape: Rectangle

Song: I'm A Little Tea Pot

Color: Yellow

Finger Play: Big Steps, Little Steps



Rectangle

Room 4

Theme: Food, Food, Food

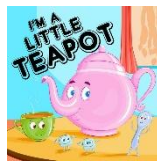
Sign: Milk

Shape: Rectangle

Song: I'm A Little Tea Pot

Color: Yellow

Finger Play: Big Steps, Little Steps



We are excited to have our schoolers with us during the holiday break! We are going to have a great time working on crafts and fun holiday activities.

Schoolers Holiday Tuition:

Full Week: \$235.00

3 full days: \$175.00

2 full days: \$145.00



November 24th – Pajama Day
November 25th – Holiday Wear Day
November 26th – Flannel Day



This month our classrooms will focus on the character value of GRATITUDE! Our classes will talk about how to show gratitude and how to be grateful. The month of November is the perfect time to learn about giving thanks.

Rooms 5-9

Theme: Fall & Giving Thanks

Science Focus: Forest Animals

Character Value: Gratitude



We are excited and ready to start completing our challenges for the Month of November. Some of the monthly quests are listed below. We even have some fun holiday themed challenges!

Room 10

xSTREAM Quest Challenges:

A Better Holiday
Chain Challenge
Coding With Cards
Zoo Imaginarium
Art with a Grateful Heart
*and so many more!



Character Value: Gratitude



School will be closed on
11/27 and 11/28
for the Thanksgiving Holiday.
Enjoy your extended weekend!

Children's Lighthouse at Stone Oak

20906 Gathering Oak | San Antonio, TX. 78260 | stoneoak@childrenslighthouse.com | 210.495.2223