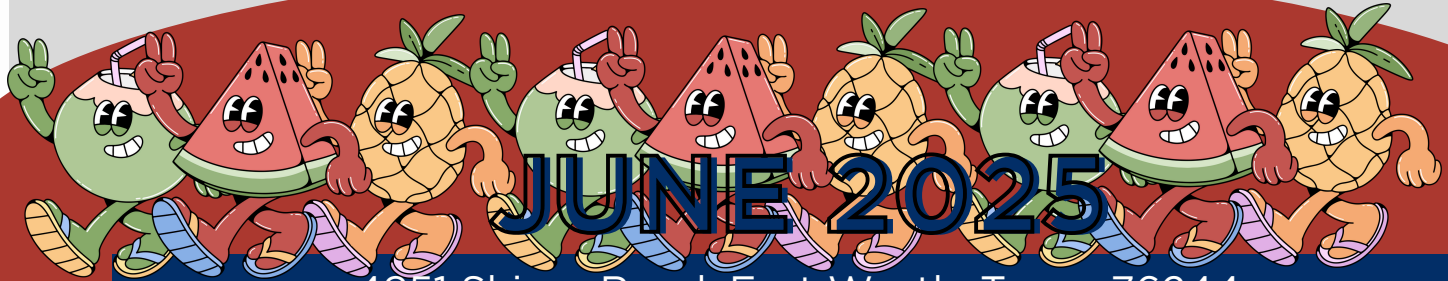




CHILDREN'S
LIGHTHOUSE
EARLY LEARNING SCHOOL

Children's Lighthouse of Heritage



4851 Shiver Road, Fort Worth, Texas 76244

Family of the Month



Spears Family

We're so excited to kick off the month of June ☀️ by welcoming our amazing schoolers back for a summer full of fun! 🎉😎 We're also celebrating our incredible dads with Donuts with Dad 🍩👨—a sweet and special way to say thank you! 💙

Get ready for fun field trips 🚌, splash days 💦, and games galore 🎲🏆🎯. It's going to be a summer to remember—let the fun begin! ☀️🌈

Congratulations!

🌟 Meet Our June Family of the Month! 🌟

We're so excited to celebrate the Spears Family! Their sweet baby girl Avery is part of our Room 7 class, and her smile truly makes each day brighter. The Spears family brings so much joy to our center, and we're so thankful to have them as part of our community. 💖

Thank you, Spears Family — and enjoy your 10% off this month! 🎉😄🌟

Notable Upcoming Events

JUNE 2ND

**hello
SUMMER**

Donuts with Dad

June 6, 2025

Family Movie Night



Special Guest

MS. Maria

June 12, 2025

June Calendar Events:

<i>June 6th</i>	<i>DONUTS WITH DAD</i>
<i>June 6TH</i>	<i>Family Movie Night</i>
<i>JUNE 12th</i>	<i>MS. MARIA</i>
<i>JUNE 13th</i>	<i>SPLASH DAY</i>
<i>June 27th</i>	<i>Splash Day</i>

June Birthdays:

**Happy
Birthday!**

Avana A.	Jonah M.	Amias W.
Mackenzie A.	Judely M.	Ms. Clarissa
Isabella B.	Sofia N.	Ms. Nadia
Cash F.	Keiana N.	Ms.Stormy

Curriculum Corner

June's Theme



SUMMER SPLASH

Character Value: Courage

Toddlers



June: Week 39

Teacher _____

11

Toddler	French	Spanish	Sign Language	French Book	Character Table
	Summer Spills	<p>What are Summer Activities?</p> <p>What things have you done today?</p> <p>Google maps</p>		Summer Fun	
	Cutie	Ships	Music & Movement	Finger Play Go Ships	Classical & Cross Music
	Fish - fish	Squid - squid	"Show, How, How Your Boat"	"Frog in The Pool"	Let's Make A Spide

Learning Area	Monday	Tuesday	Wednesday	Thursday	Friday
Art	Creative Studies	Visual Awareness/Concepts	Design/Art Principles	Art Appreciation	Art Appreciation
Geometry & Trigonometry		Basic Geometric Concepts	Using Applications	Real World Applications	Open-Ended Inquiry
Chemistry & Physics		Measurement and Units	Experimenting	Measurement and Units	Experimenting
Biology		Biological Concepts	Ecology/Ecosystems	Planting/Seedlings to Food	Biological Concepts
Language & Literature		Reading/Writing Skills	Book Reviews/Critique	Using "How/When/How Often"	Using Multiple Texts to Explore a Theme
Government & History		History/Civics Concepts	Government/History	Government/History	Project/Assignment/Report

100

A series of grayscale calibration bars and a color calibration bar.

Infant 3

June

Teacher

Weeks 39-43



Infant 1 & 2	Theme	Spanish	Sign Language	Free Box	Character Value
	Summer Splash	Pink, Red, Orange, Sunshine	Water & Fun 	Summer Fun	Courage 
	Color	Shape	Music & Movement	Finger Play or Rhyme	Outside & Gross Motor
	Pink, Red	Square, Circle	"Row, Row, Row Your Boat"	"Frog in the Pond"	Let's Make a Splash

This Month's Learning Areas

Art & Sewing	Quilting with Cozy Colors	Crocheting Warm Blankets	Knitting Cozy Socks	Painting the First Canvas	Personal Journal Development
Reading & Writing	My First Novel	100 Days of Writing	Writing the First Manuscript	Editing the First Draft	
Language & Learning	Learning Spanish Basics	Learning French Basics	Learning Italian Basics	Learning Japanese Basics	
Music & Playing	Learning to Play Guitar	Learning to Play Piano	Learning to Play Violin	Learning to Play Drums	

48. [Download](#) | [Share](#) | [Report](#) | [Flag](#)

1997-1998

School & Teacher Address					

Preschool 2



Journal: *Woods*, p. 318 (Collected from Big Head Creek)

Top cover:

100

P82 Lesson Plan		Five Week's Theme	Five Week's Application Lessons	Five Week's Research & Report	Five Week's Project	Five Week's Character Values
Summer Splash		T V S	Big Vocabulary	Clipboard Fables & Fops	Coverage!	
Monday		Tuesday	Wednesday	Thursday	Friday	
<p>1. Center, Journal, Log, Book, Research, Report, Review</p> <p>2. Center, Journal, Log, Book, Research, Report, Review</p>						
The Learning to do		<p>1. Center, Journal, Log, Book, Research, Report, Review</p> <p>2. Center, Journal, Log, Book, Research, Report, Review</p>				
Big Step Closure		<p>1. Center, Journal, Log, Book, Research, Report, Review</p> <p>2. Center, Journal, Log, Book, Research, Report, Review</p>				
Learning Lesson Revision		<p>1. Center, Journal, Log, Book, Research, Report, Review</p> <p>2. Center, Journal, Log, Book, Research, Report, Review</p>				
Outdoor Learning		<p>1. Center, Journal, Log, Book, Research, Report, Review</p> <p>2. Center, Journal, Log, Book, Research, Report, Review</p>				

Take Morning Coughs That Strike

[illegible][illegible]

© 2006 Blackwell Publishing Ltd
Journal compilation © 2006 Blackwell Publishing Ltd

[illegible]

Abstract

Preschool 3



Teacher:
Answer:

© 2006 The Authors
Journal compilation © 2006 Blackwell Publishing Ltd

© 2000 Blackwell Science Ltd *Journal of Internal Medicine* 247: 399–406

RESEARCH DESIGN

Pre-K



MANUSCRIPT NUMBER: 09-078

© 2004 Blackwell Publishing Ltd *Journal of Internal Medicine* 255: 103–110

RESEARCH DESIGN














APK

[Tutoring](#)
[Writing](#)
[Reading](#)
[Math](#)
[Science](#)

1000

Abstract The purpose of this study was to determine whether there were differences in the prevalence of self-reported depression between men and women who had been exposed to violence during childhood and adulthood. Data from the National Longitudinal Study of Adolescent Health (*N = 9,800*) were used to examine the association between exposure to violence and self-reported depression among adolescents. Results showed that exposure to violence during childhood and adulthood was associated with higher rates of self-reported depression. Furthermore, the association between exposure to violence and self-reported depression was stronger for women than for men.

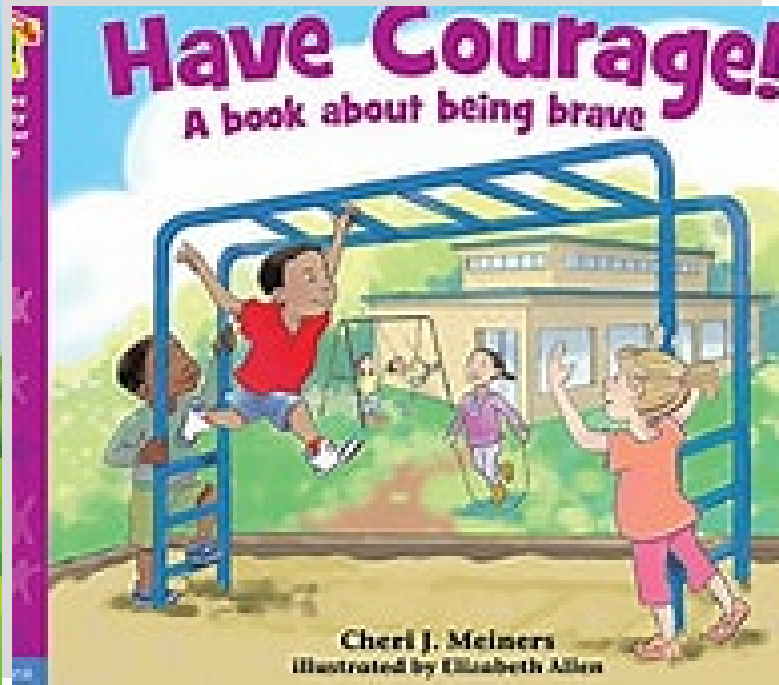
Questers

School Age Lesson Plan	Architect Academy				Pride	
			Adventurers will explore the world of architecture and design.			
	This Week...	Monday	Tuesday	Wednesday	Thursday	Friday
	xSTREAM Adventures	 Dome Design Challenge	 Field trip to (INSERT LOCATION HERE) (INSERT TIME HERE)	 Boxed Up Blueprint	 Field trip to (INSERT LOCATION HERE) (INSERT TIME HERE)	 Pretzel Cabins
		 Stained Glass Widow	Details:	 Boxed Up	Details:	 Building Brazil
 Build and Defend			 Building Blitz		 Flow Design	
Thinker Lab						
Dome Design Challenge	Strained Glass Widow	Boxed Up Blueprint	Boxed Up	Pretzel Cabins	Building Brazil	
... Dome structures have been around for thousands of years and can be found in various ancient civilizations, including the Romans, Greeks, and Egyptians. The Pantheon in Rome, built in 126 AD, is one of the most famous examples of ancient dome architecture.						
... Stained glass windows have been around for centuries, dating back to ancient Roman and medieval times. Traditionally, stained glass is made from pieces of colored glass that are cut and assembled together to create a design.						
... Before a building is made, architects draw special plans called blueprints. These plans show how tall a building will be, how many rooms it will have, and where the doors and windows will go.						
... Architects think about shapes and structures when they design buildings. Some buildings are tall and straight like towers, while others are round or shaped like triangles.						
... Log cabins are constructed using different stacking techniques. Then, mortar or clay is used to fill gaps, sealing against drafts, insects, and moisture while adding support to the structure.						
... Unique neighborhoods found in Brazil, especially in cities like Rio de Janeiro and São Paulo, are known for their vibrant culture and distinctive architecture. Favelas are neighborhoods in Brazil where many people live close together in houses that are often						
Inquiry Question						
What do you think are some advantages and disadvantages of living in a dome-shaped house?	Can you think of any pictures or designs that you have seen in stained glass windows?	How do you think architects decide on the best place for doors and windows in a building?	How do you think architects feel when they see their blueprints turn into real buildings?	What challenges might people face when building a log cabin?	How would you feel living in a colorful stacked home on a hillside?	
Would You Rather?						
...live in a dome-shaped home that looks like a soccer ball or a basketball?	...have a stained glass window that looks like a pizza or an ice cream cone!	...have a door that can take you anywhere or a window that shows you any place in the world?	...have a room shaped like a triangle or a room shaped like a circle?	...live in a cabin with a roof made of giant marshmallows or one with walls made of gummy bears?	...climb a ladder to get to your home or enter through a door on your roof?	
...build a dome structure...	...have stained glass windows in your school or	...have a house with a secret tunnel or with an	...build a home with glow in the dark walls or curved	...have a cabin that's guarded by a team of	...have a house that can change colors every day or	

This Month's Character Value:

COURAGE

Book That Teach: Humor



Our Team:

Owners:

Kelly & Benjamin Dean

Executive Director:

Elizabeth Bacon

School Director:

Kasie Hart

Assistant Director

Stefanie Racy

Curriculum Coordinator:

Alexa Ramirez

Follow us:



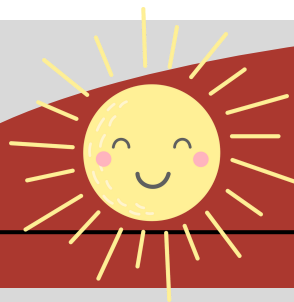
Children's Lighthouse
of Heritage

[@facebook.com/cllheritage1](https://www.facebook.com/cllheritage1)

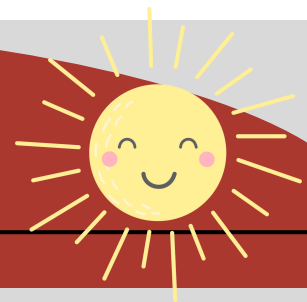


Family Referral Program

Refer a family to
Children's Lighthouse of
Heritage to earn both
families a free week of
quality childcare!



JUNE 2025



2nd
hello
SUMMER

3

4

5

6
DONUTS W.
DAD
Family Movie
Night 7-10



9

10

11

12

MS. MARIA



13

SPLASH DAY



16

17

18

19

20

23

24

25

26

27

SPLASH DAY



30