

Parent Newsletter

January 2026

Character Value of the Month:

This month's theme is "Diversity". With the help of our character value friend, Penny the Penguin, students will learn the importance of recognizing and accepting all differences.



Penny the Penguin

Diversity • Antarctica

Penny lives in Antarctica, where there are many different types of penguins. Many look different from her, but they all live together in harmony.

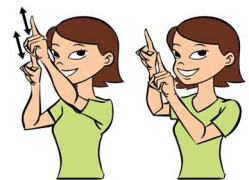
We Recognize and Accept All Differences



This month's theme in the Bright Classrooms is "Weather!" We'll be exploring the different kinds of weather, where it comes from, and where it goes. We'll be learning the following colors, shapes and sign language:



Star los estrellas



This month's themes in our Cares Classrooms are Winter, Seasons, and Arctic Animals. We'll explore all things winter, like, snow, winter wardrobe, and arctic animals habitats. We'll learn all about animals from the past, and read a favorite: "The Gingerbread Man." And we'll discuss different celebrated holidays.

Letters of the Month: J, L, P

Sign Language: **Snow** **Weather** **Penguin** **Quiet or Peace** **Cold**
La Nieve El Tiempo El Pinguino La Paz Frio



Center Birthdays

1/1 – Isla G.
1/2 – Micah R.
1/10 – Michael N.
1/10 – Ms. Makayla
1/17 – Ms. Vanessa
1/18 – Vivian D.
1/18 – Luca T.
1/20 – Teagan N.
1/21 – Ariadne C.
1/31 – Addison C.



Employee of The Month:



We're excited to recognize Ms. Krista as our January Employee of the Month! She consistently goes above and beyond by offering extra support at the front desk and helping ensure families feel welcomed and supported each day. We are thankful for the dedication, teamwork, and positive spirit she brings to our school community!

Heads Up

- We will be closed **Thursday January 1st** for New Years Day
- We will be closing at 3pm **on February 16th** for staff development training!
- We will be open with regular hours on **Monday January 19th** for Martin Luther King Day

Welcome New Students:

Junie D. – Room 1

Henry P. – Room 1

Welcome New Staff

Ms. Jessica joined us as an Assistant Teacher



Enrichment Schedule



Music with Ms. Faye from Stages

Tuesdays, 1/6, 1/13, 1/20, 1/27
(Toddlers +)



Yoga with Ms. Donna

Friday, 1/2
(Twos+)



Storytime with Ms. Katherine from CPL

Wednesday, 1/7
(Twos+)



Soccer with Ms. Vanessa

Friday, 1/16
(Twos+)

Reminders & Events!

- We will be sending out 2025 statements for tax purposes in early January, please check your email inboxes!
- Don't forget to share your love for Lighthouse. When you refer another family, you get one week of tuition **FREE** after they've been enrolled one month.

Spirit Week

Monday, January 12 - Wear Sports Gear

Tuesday, January 13 – Favorite Character Day

Wednesday January 14 – Cozy Pj Day

Thursday January 15 – Dress Up Fancy / Best Outfit

Friday January 16 - Winter Wonderland Wear Shades of Blue & White