

LIGHTHOUSE CONNECTIONS

For last
year's
words
belong to
last year's
language
And next
year's
words
await
another
voice.
And to
make an
end is to
make a
beginning

~T.S. Eliot
(1888-
1965)



from the management

A new year is always exciting. It feels like a fresh start, a new beginning. The hustle and bustle of the holiday season has come and gone, and we hope that you all get a moment or two to sit back and enjoy the blessings that have been sent your way. The few months that we spent together in 2017 were truly wonderful and we are ready to see what 2018 has waiting for us as a community, as a school, and as a great, extended family. Let's challenge each other to make the absolute best of these next 365 days and ...
Cheers to the New Year!



MARK YOUR CALENDARS...

MONDAY,
JAN 15

CENTER CLOSED

for Staff Professional
Development and Training

PARENTS DAY OUT IS COMING!

Saturday, February 10
10:00am - 2:00pm

Are you looking for a date day?
Maybe a few hours to reconnect?
Leave your children with the teachers
you trust most.

Register your child(ren) for a few
hours of fun at Lighthouse no later
than Wednesday, January 24.

\$25 for your first child and \$10 for
each additional. Fun, games and a
meal provided!

Payment must be received via check
no later than Jan. 24 and is non
refundable.

YOU'RE INVITED TO

Family Movie Night

FRIDAY, JANUARY 12 AT 7PM

RSVP NO LATER THAN

WEDNESDAY, 01/10

WE WILL BE SHOWING "SING"



JANUARY

CURRICULUM CORNER

INNOVATIONS – ROOMS 2&3

Look What We Are Learning in January

Theme
Competent Me

Rhyme / Fingerplay

Pat-A-Cake

Song

Head, Shoulders,
Knees, and Toes

Shape

Circle



Color

Blue

Baby Sign

Play



INNOVATIONS – ROOM 4

Look What We Are Learning in January

Theme
Space

Rhyme / Fingerplay

Five Little Rockets

Song

Mister Moon

Shape

Stars



Color

Blue

Baby Sign

Stars



C.A.R.E.S – ROOM 5

Monday	Tuesday	Wednesday	Thursday	Friday
WEEK #18 <u>There Was a Cold Lady Who Swallowed Some Snow</u>	Lacing Snowmen	My Shiny Snowflake	Snowstorm Numerals	My Blizzard Bag
WEEK #19 A Tree for All Seasons: Summer	A Tree for All Seasons: Fall	A Tree for All Seasons: Winter	A Tree for All Seasons: Spring	Folding Cloud Books
WEEK #20 <u>It's OK to Be Different</u> Cloud Shapes	Jan Brett Author Study This Week: <u>The Hat</u>	<u>The Mitten</u>	Mitten Match Numbers	Wear a Silly Hat Day!
WEEK #21 Penguin Mosaic	Water Bottle Penguins	Play "Penguins, Penguins, Watch What I Do"	Polar Bear Stick Puppets	Bears in the Snow
MONTHLY THEME Weather & Seasons	ALPHABET Pp, Ll, Jj	SCIENCE Magnets	NATURE Polar Animals	CHARACTER VALUE Diversity

Dear Parents,

Our January character emphasis is diversity—learning about the things that make us unique as well as the traits we all share. We will also be experimenting with magnets; and these two components—Science and Character—of our overall curriculum are good illustrations of an idea best expressed by Dr. King:

The function of education is to teach one to think intensively and to think critically.

Intelligence plus character - that is the goal of true education.

MARTIN LUTHER KING, JR.

For our all-class Show and Tell on the 3rd Friday, please let your child wear any kind of silly headgear—in honor of our author spotlight, Jan Brett. And in case we haven't told you lately... Thank you so much for supporting our Show and Tell activities—not only are they fun for the children, but they also provide yet another means of enriching vocabulary and language



C.A.R.E.S – ROOM 8

Monday	Tuesday	Wednesday	Thursday	Friday
Week #18 "Round and Round the Seasons Go"	My Book of Seasons	Book Study: <u>The Hat</u>	The Colors of My Umbrella	SHOW & TELL Seasons Sort
Week #19 100 Chart Mystery Figure	Tortilla Snowflakes <u>No Two Alike</u>	Craft Stick Creations	Cloud Formations	SHOW & TELL Clean Mud!
Week #20 We Work Together (Cooperative Games)	My Weather Words Book	Pull Together or Push Away?	M Is for Magnet Magnet Exploration Day!	SHOW & TELL Magnet Exploration Day-Part 2
Week #21 Polar Animals on the Globe	"Walking Feet" Polar Bear	Polar Bear Book	How to Draw a Penguin	SHOW & TELL Black & White Day
MONTHLY THEME Weather & Seasons	ALPHABET Pp, Ll, Jj	SCIENCE Magnets	NATURE Polar Animals	CHARACTER VALUE Diversity

Dear Parents,

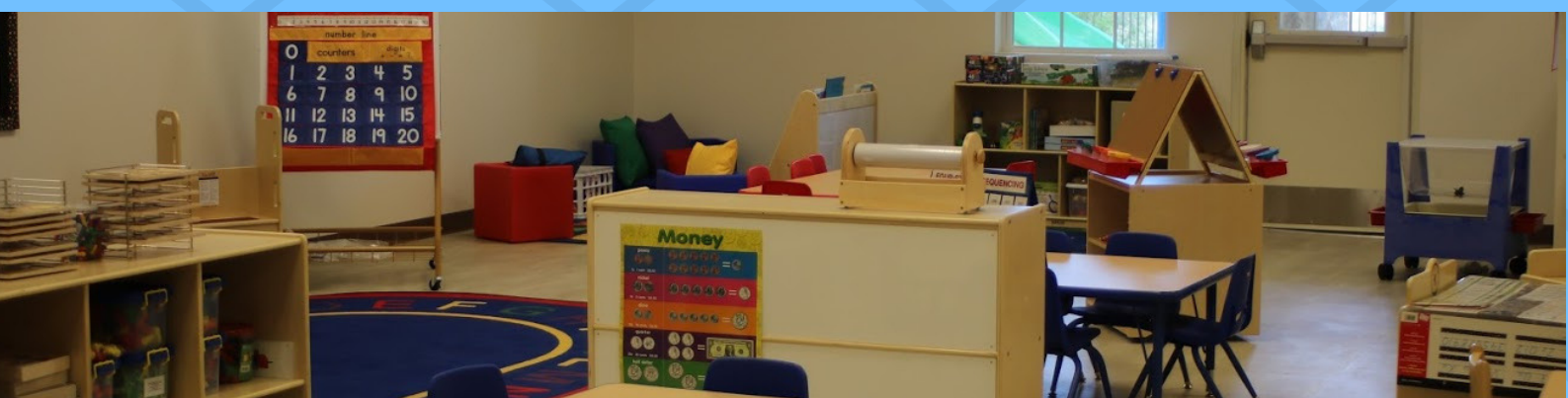
January is a great month for science—clouds, static electricity, and magnets provide us with "real-life" opportunities to use the Scientific Method (forming & testing hypotheses and then analyzing and applying results); and this month, we're even applying some critical thinking in our character value emphasis on **diversity**. These two components—Science and Character—of our overall curriculum are good illustrations of an idea best expressed by Dr. King:

The function of education is to teach one to think intensively and to think critically.

Intelligence plus character - that is the goal of true education.

MARTIN LUTHER KING, JR.

For our all-class Show and Tell on the 1st Friday, please bring something that symbolizes a season—for example,





Amazing Athletes



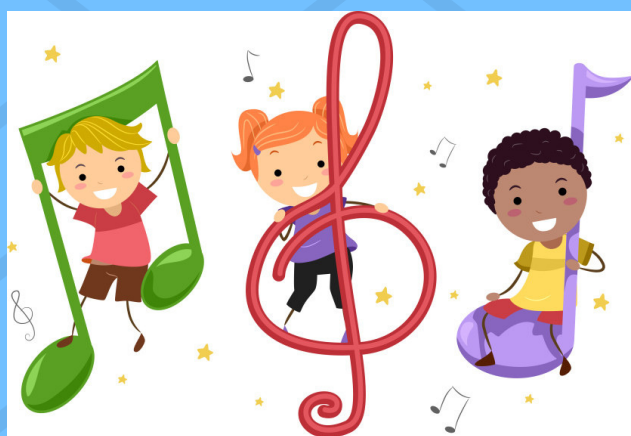
Educational Sports Programs

who? all enrolled children 2.5 - 5yrs

when? every Thursday @ 9am

what? year round program that is designed to enhance children's development through movement. basics of 9 different sports while building confidence, practicing teamwork and improving 7 areas of motor development.

cost? \$40/month, with a \$15 registration fee, free t-shirt



Music with Ms Jane

who? classrooms 3, 4, 5 and 8

when? everyother Monday morning

what? award winning pre-school music curricula

cost? included in tuition



Spanish

who? classrooms 4, 5 and 8

when? daily lessons 15 - 30 minutes

what? introduction to daily Spanish terms using the C.A.R.E.S curriculum as a guide to the daily lessons. The children learn the language in art, learning wall and music.

cost? included in curriculum



Bricks 4 Kidz

who? children ages 3-5yrs.

when? TBD one class/week

what? S.T.E.M lesson followed by engineering models that reflect the lesson. Bricks 4 Kidz models are proprietary model plans that utilize LEGO bricks to bring learning to life! Min. of 8 children enrolled to have class

cost? \$80 for an 8 week session



CREATIVE RESOURCES – ROOM 10



Track 3: Our History **Theme: the Middle Ages** **Character Value: Diversity**

The Schoolers will journey to the time of knights, kings, queens and castles in Middle Ages this month.



did you know? ...

Originally the towers of castles were built with square tops, but were later replaced with round towers that offered better defense and visibility.



Thank you for joining us for our...

BREAKFAST WITH SANTA

DECEMBER 16, 2017