



# Lighthouse Beacon

## February 2026



### Director's Corner

February is here, and LOVE is in the air! We love having you and your children as part of our Lighthouse family and could not imagine our school without you.

This month will be filled with so much fun and lots of activities. Make sure to keep an eye out for all those cute holiday crafts that will be going home. Our classrooms will be having a Valentine's Day card/gift exchange. Please check your child's Tadpoles Daily Report for teacher communications regarding the gift exchange. We hope that you will be able to join us for the fun and festivities!

As always, feel free to call or email if you have any questions.

Julie Gibbons



### Spring Picture Day

Spring pictures have been scheduled with Ms. Caitlin.

March 3<sup>rd</sup> Rooms 1-5  
and ALL siblings

March 4<sup>th</sup> Rooms 6-9



### **Valentine's Day Gift/Treat Exchange**

Get ready for a day of friendship and fun! Our Valentine's gift exchange is scheduled for **Friday, February 13th**. This is a wonderful opportunity for our students to practice kindness and share a little joy with their classmates.



**Monday, February 16<sup>th</sup>**

Children's Lighthouse will be closed in observance of Presidents' Day.



### **Western Day**

Thursday, February 19<sup>th</sup>

Get dressed in your best western attire and get ready to RODEO SAN ANTONIO!



Below is a breakdown of the monthly focus. To continue the extension of learning at home you can practice using the sign language word and point out the colors and shapes in your child's world.

### Rooms 1,2, & 3

**Theme:** Wheels On The Move

**Sign:** Wheel

**Shape:** Heart

**Song:** Down By The Station

**Color:** Purple

**Finger Play:** Five Little Trucks



### Room 4

**Theme:** Wheels On The Move

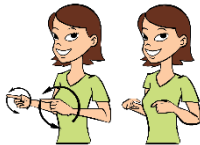
**Sign:** Wheel

**Shape:** Heart

**Song:** Down By The Station

**Color:** Purple

**Finger Play:** Five Little Trucks



Kellan C. 2/1  
Jameson B. 2/6  
Joseph S. 2/6  
Anagaby 2/10  
Valeria M. 2/7  
Katelyn B. 2/11  
Adalyn G. 2/14  
Sofia A. 2/19  
Sterling K. 2/20  
Archer C. 2/22  
Caroline P. 2/26  
Zifeng W. 2/27



This month our classrooms will focus on the character value of TRUTHFULNESS! Our classes will talk about what it means to tell the truth and how important it is to be truthful.

### Rooms 5-9

**Theme:** Our Universe and Transportation

**Science Focus:** Birds

**Character Value:** Truthfulness



We are excited and ready to start completing our challenges for the new month. Some of the monthly quests are listed below and we even have some fun Valentine's Day themed challenges!

### Room 10

**xSTREAM Quest Challenges:**

Amazing Because...  
Art Speak  
Four in a Row  
Heart Trouble  
Hoop Mania  
and so many more!



**Character Value:** Truthfulness

