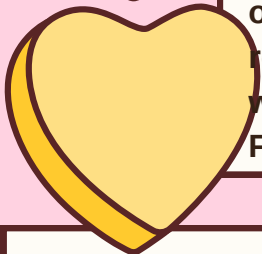
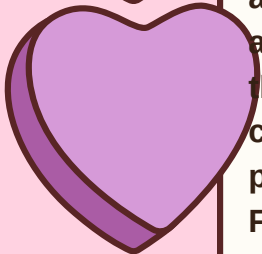
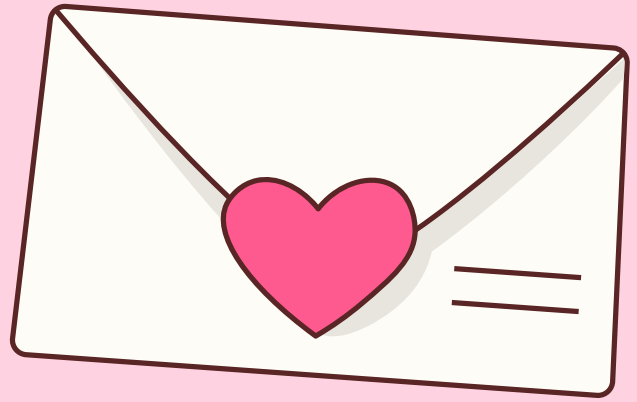


February Newsletter

2026

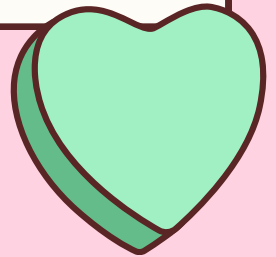
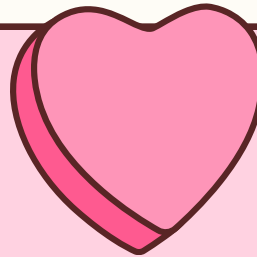


Welcome to February at Children's Lighthouse of Hoover! As we embrace this month, we're excited to explore the themes of love, friendship, and community with our young learners. February is a special time in our facility as it marks an opportunity to celebrate the bonds we share with one another. For the children, this month is filled with heartwarming activities that encourage kindness, cooperation, and creativity. They will engage in crafts and stories that highlight the importance of friendship, and they'll participate in events that help them understand the joy of helping others. For parents, February is a chance to witness the growth and development of their children as they learn valuable social skills and build meaningful relationships. We look forward to a month of warmth and togetherness, and we thank you for being a part of our vibrant community. Let's make February a month full of learning and love!

Inclement Weather

Our school follows the Hoover City School System's guidelines for inclement weather. To ensure you're informed promptly of any closures or delays, please update us with any changes to your email addresses or phone numbers.

Thank you for your cooperation.

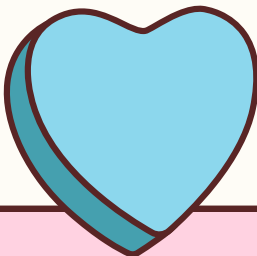
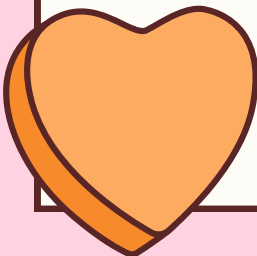


Tuition & Curriculum Fee

Tuition will increase starting this February. This decision supports the quality of education and services we provide.

The increase is due to operational cost rises. We remain committed to maintaining a comprehensive curriculum.

Also, as a reminder, the March curriculum fee of \$75 is due March 1st.





Peaceful Pickup

Parents play a crucial role in maintaining a peaceful and organized environment during school pickups, which is important for the safety and well-being of all children. To achieve this, parents can utilize tools like Procare or directly contact the school office to inform staff when pickup is about to happen. This ensures a smoother transition at the end of the school day. These measures not only enhance safety by reducing the risk of accidents but also create a calm atmosphere, allowing children to leave school on a positive note. This approach fosters a sense of community and cooperation among parents, school staff, and students, making the daily pick-up routine more efficient and pleasant for everyone involved.



Curriculum Corner

Infants

Theme: Wheels on the Move

Shape: Heart

Color: Purple

Songs & Rhymes: Down By the Station, 5 Little Trucks

Sign Language: Wheel, Heart, Purple, Train, Car, Truck

Preschool 2s & 3s

Theme: Our Universe, Birds, Transportation

Letters: U,N,W Review

Shape: Heart

Color: Purple

Songs & Rhymes: Down By the Station, 5 Little Trucks

Sign Language: Flag, Bird, Stop, I Love You

Pre-K

Theme: Our Universe, Birds, Transportation

Letters: Uu,Nn,Ww Review

Shape: Heart

Color: Purple

Songs & Rhymes: Down By the Station, 5 Little Trucks

Sign Language: Flag, Bird, Stop, I Love You

School Age:

Quest Challenges include Art Speak, Blanket Volleyball, and Rescue the Card!

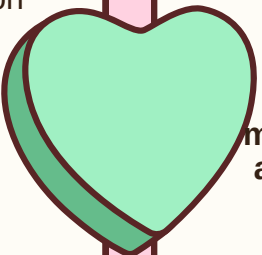


Character Value

Teaching young children the value of truthfulness, especially in February, is vital as it builds trust and integrity. It helps them express themselves honestly, fostering a safe environment.

Truthfulness is key for strong character, promoting accountability and respect.

Parents can support truthfulness by modeling honesty, admitting mistakes, and praising honesty. Creating a safe space for learning from mistakes without punishment encourages truthfulness. Activities like storytelling or role-playing offer practice in honesty. Additionally, reading books highlighting truthfulness reinforces its importance, showing children that being truthful is a lifelong strength.



Reminder: We are closed for Teacher's Workday on February 16th, 2026