



OUR STUDENTS ARE ONE IN A MELON!

FEBRUARY 2026

DIRECTORS CORNER

HAPPY FEBRUARY EVERYONE! LOVE IS IN THE AIR HERE AT CHILDREN'S LIGHTHOUSE! I AM EXCITED TO WELCOME SO MANY NEW FAMILIES TO OUR SCHOOL; WE ARE SO HAPPY TO HAVE YOU! DON'T FORGET OUR SCHOLASTIC BOOK FAIR WILL BE HERE FROM 2/9- 2/13; OUR VALENTINE'S DAY PARTIES WILL ALSO BE GOING ON 2/13 AT 3:30P, AND A VERY SPECIAL PARENT'S NIGHT OUT ON 2/14! WE WILL ALSO BE CLOSED 2/16 FOR PRESIDENTS' DAY!

AS ALWAYS, MY DOOR IS ALWAYS OPEN SO PLEASE DO NOT HESITATE TO GIVE ME A CALL OR CATCH ME IN THE HALL! HAVE A WONDERFUL FEBRUARY!

Jessice Brey
Center Director

CLOSED
2/16 FOR
PRESIDENT'S
DAY

WE ARE SO PROUD TO OFFER YOU THE CONVENIENCE OF SAFELY AND SECURELY PAYING YOUR TUITION THROUGH AUTOMATED PAYMENTS WITH TUITION EXPRESS! YOU CAN HAVE THE PEACE OF MIND THAT YOUR TUITION IS PAID ON TIME EACH WEEK AND NEVER HAVE TO WORRY ABOUT LATE FEES AGAIN!



ADDITIONAL
INFORMATION IS
AVAILABLE AT THE FRONT
DESK!



FEBRUARY 13TH VALENTINE'S DAY PARTIES



3:30P | IN YOUR CHILD'S CLASSROOM

VALENTINE SPIRIT WEEK

FEBRUARY 9-13

MON-2.9

PAJAMA
DAY

TUES-2.10

RAINBOW
DAY

WED-2.11

ON
WEDNESDAY'S
WEWEAR PINK

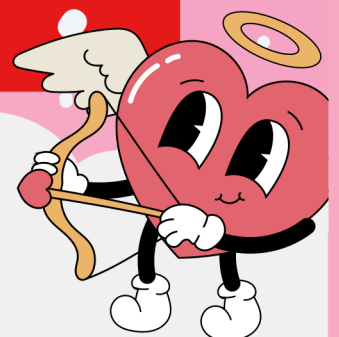
THURS-2.12

ANTI-
VALENTINE'S
DAY

FRI-2.13

VALENTINE'S
ATTIRE DAY

BOOK FAIR
FEBRUARY 9-13





CHILDREN'S
LIGHTHOUSE
EARLY LEARNING SCHOOL

FEBRUARY SPIRIT DAYS:

February 6TH : JERSEY DAY

FEBRUARY 9TH : PAJAMA DAY

FEBRUARY 10TH : RAINBOW DAY

FEBRUARY 11TH : ON WEDNESDAYS WE WEAR PINK!

FEBRUARY 12TH : ANTI-VALENTINE'S DAY

FEBRUARY 13TH : VALENTINE'S ATTIRE!

FEBRUARY 20TH : RODEO ATTIRE

FEBRUARY 27TH : PAJAMA DAY

2026 EXTRA-CURRICULAR SCHEDULE:

**MONDAY MORNINGS:
MINI MAESTRO**

**WEDNESDAY
MORNINGS:
STRETCH-N-GROW
DANCE STARS**

**FRIDAY MORNINGS:
STRETCH-N-GROW
SOCCER STARS**

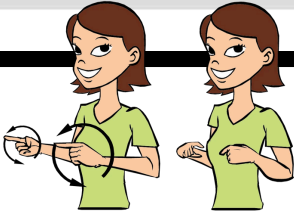
PARENTS NIGHT OUT

**FEBRUARY 14TH, 2026
5 PM - 11 PM**

**\$45 FOR FIRST CHILD/
\$40 FOR EACH AFTER**

**PAYABLE BY EXACT
CHANGE OR BLANK (PAY
TO) CHECK**

**PARENTS ARE RESPONSIBLE FOR
BRINGING ALL SUPPLIES**



ROOMS 1 & 2

THEME: WHEELS ON THE MOVE

SPANISH: PURPLE/VIOLETA, HEART/CORAZON

COLOR: PURPLE

SHAPE: HEART

MUSIC & MOVEMENT: "DOWN BY THE STATION"

SIGN LANGUAGE: WHEEL/LAS RUEDAS

CHARACTER VALUE: TRUTHFULNESS

ROOM 3

THEME: WHEELS ON THE MOVE

SPANISH: PURPLE/VIOLETA,

HEART.CORAZON, WHEEL/LA RUEDA,

TRAIN/EL TREN, CAR/EL COCHE

COLOR: PURPLE

SHAPE: HEART

MUSIC & MOVEMENT: "DOWN BY THE STATION"

SIGN LANGUAGE: WHEELS/LAS RUEDAS

CHARACTER VALUE: TRUTHFULNESS

ROOM 4

THEME: WHEELS ON THE MOVE

SPANISH: PURPLE/VIOLETA, HEART/CORAZON,

WHEEL/LA RUEDA, TRAIN/EL TREN, CAR/EL

COCHE, TRUCK/EL CAMION

COLOR: PURPLE

SHAPE: HEART

MUSIC & MOVEMENT: "DOWN BY THE STATION"

SIGN LANGUAGE: WHEEL/LA RUEDA

CHARACTER VALUE: TRUTHFULNESS



ROOMS 5 & 6

THEME: OUR UNIVERSE, BIRDS,

TRANSPORTATION, AMERICA

SPANISH & SIGN LANGUAGE: STAR/LA

ESTRELLA, BIRD/EL PAJARO, STOP/ALTO,

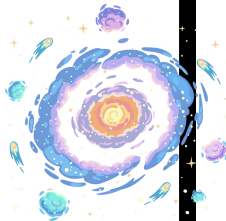
FLAG/LA BANDERA

ALPHABET BOOK: MODES OF TRANSPORTATION

AUTHOR: MO WILLEMS

ALPHABET: U, N, W

CHARACTER VALUE: TRUTHFULNESS



ROOM 7

THEME: OUR UNIVERSE, BIRDS,

TRANSPORTATION, AMERICA

SPANISH & SIGN LANGUAGE: STAR/LA

ESTRELLA, BIRD/EL PAJARO, STOP/ALTO,

FLAG/LA BANDERA

ALPHABET BOOK: MODES OF

TRANSPORTATION

ALPHABET: U, N, W

CHARACTER VALUE: TRUTHFULNESS



ROOM 8

THEME: OUR UNIVERSE, BIRDS,

TRANSPORTATION, REVIEW

SPANISH: FLAG/LA BANDERA, BIRD/EL

PAJARO, STOP/ALTO, I LOVE YOU/TE AMO

AUTHOR: MO WILLEMS

ALPHABET: Uu, Nn, Ww

CHARACTER VALUE: TRUTHFULNESS





CHILDREN'S
LIGHTHOUSE
EARLY LEARNING SCHOOL



ROOM 9



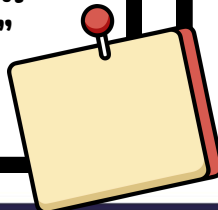
THEME: AMERICA, OUR UNIVERSE, BIRDS,
TRANSPORTATION
SPANISH & SIGN LANGUAGE: FLAG/LA
BANDERA, ROCKET/EL COHETE, BIRD/EL
PAJARO, WHAT TIME IS IT?/QUE HORA ES?
ALPHABET w, u, n
AUTHOR: MO WILLEMS
CHARACTER VALUE: TRUTHFULNESS



ROOM 10



**HOW DOES IT FEEL WHEN SOMEONE
SAYS SOMETHING NICE ABOUT YOU?
IT FEELS PRETTY AMAZING, DOESN'T
IT? FOR THIS MONTH'S COMMUNITY
CHALLENGE, WE WILL MAKE SURE THE
QUESTER'S IN OUR CLASS KNOW HOW
GREAT WE THINK THEY ARE WITH
"YOU ARE AMAZING BECAUSE..."
NOTECARDS!**



FEBRUARY BIRTHDAYS!

LILITH T. 2 | 4
MS. JESSICA B. 2 | 7
AUSTIN G. 2 | 7
BOWEN P. 2 | 13
MS. BRI 2 | 14
KALEO R. 2 | 15
MONICA R. 2 | 16
SAGE T. 2 | 18
MS. LESLY 2 | 19
PAISLEY Y. 2 | 21
MS. ASHLEY 2 | 26
MADISON B. 2 | 28
EVERETT F. 2 | 29



JANUARY RECAP