



# Lighthouse Beacon

## February 2024



### Director's Corner

February is here, and LOVE is in the air! We love having you and your children as part of our Lighthouse family and could not imagine our school without you.

This month will be filled with so much fun and lots of activities. Make sure to keep an eye out for all those cute holiday crafts that will be going home. Our classrooms will be hosting a Valentine's Day card exchange and party. Look for a sign-up sheet on the classroom door. Check your child's Tadpoles Daily Report for any special teacher requests or communications. We hope that you will be able to join us for the fun and festivities!

As always, feel free to call or email if you have any questions.

Brandi Cannon



### Spring Picture Day

Spring pictures have been scheduled with Ms. Caitlin.

February 28<sup>th</sup> rooms 1-5  
and ALL siblings

February 29<sup>th</sup> rooms 6-9



## Join us for a fun VALENTINE'S DAY PARTY

Wednesday, February 14<sup>th</sup>

We will be having parties in  
rooms 3 – 8 starting at 3:00pm  
and room 9 at 3:30pm. Sign-up  
sheets will be posted on  
classroom doors soon!



### Western Day

Wednesday, February 21<sup>st</sup>

Get dressed in your best  
western attire and get ready  
to RODEO!



Monday, February 19<sup>th</sup>

Children's Lighthouse will  
be closed in observance of  
Presidents' Day.



Below is a breakdown of the monthly focus. To continue the extension of learning at home you can practice using the sign language word and point out the colors and shapes in your child's world.

### Rooms 1,2, & 3

**Theme:** Wheels On The Move

**Sign:** Wheel

**Shape:** Heart

**Song:** Down By The Station

**Color:** Purple

**Finger Play:** Five Little Trucks



### Room 4

**Theme:** Wheels On The Move

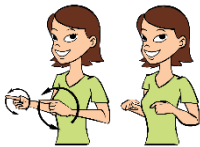
**Sign:** Wheel

**Shape:** Heart

**Song:** Down By The Station

**Color:** Purple

**Finger Play:** Five Little Trucks



This month our classrooms will focus on the character value of TRUTHFULNESS! Our classes will talk about what it means to tell the truth and how important it is to be truthful.

### Rooms 5-9

**Theme:** Our Universe and Transportation

**Science Focus:** Birds

**Character Value:** Truthfulness



We are excited and ready to start completing our challenges for the new month. Some of the monthly quests are listed below and we even have some fun Valentine's Day themed challenges!

### Room 10

**xSTREAM Quest Challenges:**

Amazing Because...  
Art Speak  
Four in a Row  
Heart Trouble  
Hoop Mania  
and so many more!



**Character Value:** Truthfulness



Kellan C. 2/1  
Jameson B. 2/2  
Izzy H. 2/6  
Hilton H. 2/6  
Valeria M. 2/7  
Katelyn B. 2/11  
Alyssa T. 2/13  
Adalyn G. 2/14  
Jade J. 2/18  
Sofia A. 2/19  
Brantley W. 2/20  
Sterling K. 2/20  
Nolan S. 2/21  
Archer C. 2/22  
Liam M. 2/25  
Caroline P. 2/26

