

THE LIGHTHOUSE NEWS BEACON

CHILDREN'S LIGHTHOUSE LEARNING CENTER

EDUCATIONAL DAY CARE WITH A PURPOSE



CHILDREN'S LIGHTHOUSE STAFF

Angie O'Connor

Owner & Director, Administration

Veronica Villalobos

Morning Director

Katie Gonzales

Afternoon Director

Kiomarie Rodriguez

Curriculum Coordinator &
Education Coach

Bhargavi Ashokkrishnan

Closing Manager



Let's Rodeo San Antonio!

February 12 through 28, 2026 is the San Antonio Stock and Rodeo Show! To celebrate and get in the rodeo spirit, we have Dress Like A Cowgirl/ Cowboy Day on Friday, February 20.

Remember... a cowgirl/cowboy costume is the best ranch dressing!

WINTER ASSESSMENTS

The teachers completed Winter Assessments. Parents will receive the assessments the second week of February 2026. Parent Teacher Conferences will be February 18, 19, & 20.

Spring Assessments will also begin and those completed Assessments will go home to parents in May.
quickly as possible and return them to a member of the front office.

Mid-Year Move Ups

Because of the way some of the children's birthdays fall, we do mid-year move ups. This will take place the week of February 16.

Parents of children that will be moving up mid-year will be notified by a member of the Front Office staff.

CHILDREN'S LIGHTHOUSE LEARNING CENTER

25473 Bulverde Road
San Antonio, TX 78261
210.494.9200 / 830.980.6940

BulverdeRoad@ChildrensLighthouse.com
www.ChildrensLighthouse.com/BulverdeRoad

THE LIGHTHOUSE NEWS BEACON

♥ CALENDAR 🍀

FEB 12 to 29 – SAN ANTONIO RODEO

**FEB 20 – DRESS LIKE A COWGIRL/
COWBOY DAY**

**FEB 9 – WINTER ASSESSMENTS &
UPDATE TO ENROLLMENT
FORMS OUT TO PARENTS**

**FEB 13 – VALENTINE'S DAY PARTIES
3:00 PM– 4:00 PM &
COMAL ISD CLOSED**

**FEB 16 – CENTER CLOSED FOR IN-
SERVICE TRAINING &
COMAL SCHOOLS CLOSED &
NEISD SCHOOLS CLOSED**

**FEB 17, 18 & 19 WINTER
ASSESSMENTS – PARENT
TEACHER CONFERENCES**

**MAR 2 - DR. SEUSS' BIRTHDAY/
READ ACROSS AMERICA
CELEBRATION & PARADE**

MAR 6 – EARLY RELEASE NEISD

**MAR 9 - MAR 13– SPRING BREAK FOR
NEISD AND COMAL ISD**

**MAR 17 – WEAR GREEN FOR ST.
PATTY'S DAY**

**MAR 23 - MAR 27 – SCHOLASTIC
BOOK FAIR**

KEEPING INFORMED AND IN TOUCH

Because we have a large number of families in our group now, we have several methods of communication to keep information flowing so all our families are well informed of announcements, activities and programs.

This monthly newsletter and our monthly calendar are always posted on our web site (www.ChildrensLighthouse.com/BulverdeRoad).

Additional Resources to stay informed about activity announcements and reminders:



LIKE us on facebook

Children's Lighthouse – 25473 Bulverde Road, San Antonio



Follow us on Instagram

Our Handle is: @clclbulverderoad



**** GENERAL INBOX EMAIL ADDRESS ****

BulverdeRoad@ChildrensLighthouse.com

Experience the Lighthouse Difference

THE LIGHTHOUSE NEWS BEACON

MONDAY

No Enrichment Class

STRETCH-N-GROW

Visit website for enrollment and payment
www.stretch-n-grow.com

TUESDAY



SOCCKER SHOTS

Visit website for enrollment and payment
www.socckershots.org

WEDNESDAY

No Enrichment Class



TEAMS OF TOMORROW

Visit website for enrollment and payment
www.teamsoftomorrow.com

FRIDAY



TIPPY TOES DANCE

Visit website for enrollment and payment
www.tippytoesdance.com

Experience the Lighthouse Difference

THE LIGHTHOUSE NEWS BEACON

NEW FACES

You may notice several new faces around the center... we have many new families enroll this month. Welcome!

With the increasing enrollment, we also have many new staff members. Welcome to you as well.

PARENT REFERRAL PROGRAM

Help us spread the word about Children's Lighthouse – Bulverde Road and earn FREE tuition!

When you refer family, friends, neighbors, or co-workers to our Center, you will be credited a free week of tuition for your oldest child after the referred family has enrolled and attended our center for four (4) consecutive weeks!

Thank you for your continued support of our Center. We appreciate our families!

OUTDOOR PLAY

We take advantage of nice weather when we can.

We watch the air quality index and air temperature. If conditions are too hot or air quality is not good, the children will not go outside.

NO SANDALS

Children are to wear closed toe shoes while at school. No sandals.

UPDATE MEDICINE POLICY

We are only administering doctor prescribed medication to children.

The times we administer medications are 11:30 AM and 3:30 PM.

Please arrange your child's medication schedule to align with our timeframe.

Further, we are no longer able to administer any medication, OTC or prescribed, unless we have a doctor's note with explicit directions for administration of the medication. All medication MUST be in it's original packaging. If prescribed, RX must be on the packaging.

THE LIGHTHOUSE NEWS BEACON



Valentine's Day Class Parties

Friday, February 13, 2026 3:00 pm to 4:00 pm

Sign up for party treats will be in each classroom.

If your child does not normally attend school on Fridays or is not normally here past 2:00 pm, please know your child is welcome to join the party. Please call in advance to let us know if your child will be participate from 3:00pm to 4:00pm.

The children will exchange Valentine's Day cards. Please bring UNADDRESSED Valentine's Day Cards for each child in class. Email will be sent with the number of children in your child's classroom.



**The Center will be closed Monday
February 16, 2026
for
Teacher In-Service Training**



THE LIGHTHOUSE NEWS BEACON

New and Updated Drop Off and Pick Up Policies

DROP OFF CUT OFF TIME

Circle Time at our Center is at 9:00 AM. We strongly encourage all students are present and in class by 8:55 AM so they are able to participate in Circle Time and not arriving during Circle Time. Circle Time initiates the learning portion of our day.

To ensure that the children are present for key learning concepts and to maximize early learning concepts, we are initiating a Drop Off Cut Off Time . Children must arrive to school no later than 9:30 AM unless previous notification has been given for doctor's appointment, etc.

...To provide notice of a late arrival, please send an email to our General Inbox: BulverdeRoad@ChildrensLighthouse.com.

Children cannot be dropped off just before or during nap time. Nap time is 12:00 pm to 2:00 pm.

PICK UP TIME

Our latest pick up time is 6:15 PM. Late pick up fees begin at 6:30 PM. The late pick up fee is \$2.00 a minute with a \$20.00 minimum.

NO CALL/ NO PICK UP FOR AFTER SCHOOLERS

... If your after-schooler is absent from elementary school or is picked up early due to illness or doctor's appointment, parents must notify us that they will not be present /on our bus that afternoon. It is our policy that our school buses do not leave the school until all children are accounted for. If a child is not present for bus run and we have not been notified, our driver will contact the front office and a member of the front office will reach out to the child's parents to account for their whereabouts. Our bus drivers are not permitted to leave the school until a member of the front office has spoken to one of the child's parents to confirm they are accounted for.

The No Call/ No Pick Up Fee is \$20.00 per child.

THE LIGHTHOUSE NEWS BEACON

Texas Rising Star (TRS) Certification



Congratulations to us! We are a TRS Four Star Center!!

Toys from Home

We are discouraging children bringing toys from home. If a child does bring a toy from home we are asking parents to either 1. Bring the toy back to the car, or 2. Place the toy in the child's cubbie where it will remain until pick up.

... We have had several toys from home coming in to the building and they toy gets broken, lost or causes a distraction.

...We do have Show and Tell on occasion where Toys/ items from home are permitted.

MISPLACED ITEMS

We have had incidents of "temporarily misplaced" belongings recently. These things happen occasionally, we do our best to locate the items and get them back to whom they belong as quickly as possible. It really helps if parents label all their child's belongings: clothing (jackets, sweaters, hats, etc.), blankets, and "lovey" toys. backpacks, bags, and car seats.

Experience the Lighthouse Difference

THE LIGHTHOUSE NEWS BEACON

Current Illness Policy:

Most medical professionals consider a fever to be 100.4. If your child has a fever at or above 100.4, please seek medical attention. Please keep them home.

We have a NO temperature policy at our school. If your child has ANY fever, they will be sent home and must be picked up within the hour. The child must remain out of the school for 24 hours and be fever free without the use of fever reducing medication for 24 hours before they can return.

If your child is absent or has been sent home due to illness with, fever, cough, or contagious illness (Covid, Hand Foot & Mouth/ RSV, Strep, etc.), a doctor's note with a date that the child may return to school is required

Going into the 2025 fall and winter season if a child is diagnosed with a contagious illness, household members /siblings are strongly encouraged to stay at home to reduce the spread of germs to others.

A doctor's note is always required for children to return to school after a contagious illness (COVID, Flu, Strep, RSV, Hand Foot & Mouth, Pink Eye, etc.).

*** ● *** ● *** ● ***

The children are taught to sneeze into their elbow, wipe/ blow their noses often, as well as maintaining frequent hand washing. We do this in addition to our cleaning/ sanitizing/ disinfecting protocol to help reduce the spread of illness.

Hand washing is the best way to reduce the spread of illness. We are diligent about handwashing procedures.

Experience the Lighthouse Difference

THE LIGHTHOUSE NEWS BEACON

~~~♣~~~♣~~~♣~~~♣~~~

## HAPPY ST. PATTY'S DAY



### Dr. Seuss Parade

We celebrate Read Across America by celebrating Dr. Seuss' birthday on February 2, 2026.

This month, the classrooms read a variety of Dr. Seuss books. The classes make costumes and parade through the center!



Monday March 17, 2026 is  
Dress In Green Day



## SPRING BREAK 2026

*If you need care for you school aged child, we are available*

- NEISD and Comal ISD  
March 9 - 13, 2026

*Please let a member of the Front Office know if your child will be in attendance. We will provide daily or weekly prices.*

*If your child will not be in attendance, let us know so that we can apply one (1) of your five (5) weeks of Absentee Credit.*

*Experience the Lighthouse Difference*

# THE LIGHTHOUSE NEWS BEACON

## ANNOUNCEMENTS

We have  
changed our  
late pick up fees

## 2026 Center Closings

*Our Center is closed on*

January 1, 2026 (*Thursday*)

January 19, 2026 (*Monday*)

February 16, 2026 (*Monday*)

April 3, 2026 (*Friday*)

April 6, 2026 (*Monday*)

May 25, 2026 (*Monday*)

July 3, 2026 (*Friday*)

August 14, 2026 (*Friday*)

September 7, 2026 (*Monday*)

October 12, 2026 (*Monday*)

November 26, 2026 (*Thursday*)

November 27, 2026 (*Friday*)

December 24, 2026 (*Thursday*)

December 25, 2026 (*Friday*)

December 31, 2026 (*Thursday*)

January 1, 2027 (*Friday*)

New Year's Day

Martin Luther King Day

In Service Day for  
Teacher Training

Good Friday

Easter Monday

Memorial Day

Independence Day

In Service Day for  
Teacher Training

Labor Day

In Service Day for  
Teacher Training

Thanksgiving Day

Day after Thanksgiving

Christmas Eve Day

Christmas Day

New Year's Eve Day

New Year's Day

**HOURS OF OPERATION ARE: 6:30 PM to 6:30 PM**

**Latest Pick up is 6:15 PM**

**LATE PICK UP FEES ARE ASSESSED PER CHILD:**

**\$20.00 Minimum & an additional \$2.00 per minute after 6:40 PM**

*Experience the Lighthouse Difference*



# THE LIGHTHOUSE NEWS BEACON

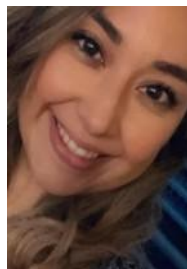
*Happy Valentine's Day*  
*and*  
*Happy St. Patrick's Day*



Ms. Angie



Ms. Veronica



Ms. Katie



Ms. Kio



Ms. Bhagi



*Experience the Lighthouse Difference*