

THE LIGHTHOUSE NEWS BEACON

CHILDREN'S LIGHTHOUSE LEARNING CENTER
EDUCATIONAL DAY CARE WITH A PURPOSE



In March we enjoyed Spring Break, the Scholastic Book Fair and our 14th Annual Egg Hunt!

April is Spring Pictures and Fiesta Shoe Box Parade!

Spring has sprung and is in full swing. Spring Pictures are early April. Our students study the life cycle of butterflies. We also have our Annual Fiesta Shoe Box Parade!

May is Graduation Pictures, Mother's Day, Spring Assessments, and Pre-K Graduation!

In May we have our Pre-K graduation pictures at the beginning of the month. We celebrate Mother's Day. Spring Assessments come out mid-month. And we celebrate Pre-K Graduation!!

CHILDREN'S LIGHTHOUSE STAFF

Angie O'Connor
Owner & Director

Veronica Villalobos
Director

Katie Gonzales
Co-Director

Kio Rodriguez
Curriculum Coordinator &
Education Coach

Bhagi Ashokkrishnan
Closing Manager

Helene VanCleave
Kitchen Manager

CHILDREN'S LIGHTHOUSE LEARNING CENTER

25473 Bulverde Road
San Antonio, TX 78261
210.494.9200 / 830.980.6940 / 830.980.6941
BulverdeRoad@ChildrensLighthouse.com
www.ChildrensLighthouse.com/BulverdeRoad

THE LIGHTHOUSE NEWS BEACON

KEEPING INFORMED AND IN TOUCH

We have a large number of families in our group now, we have several methods of communication to keep information flowing so all our families are well informed of announcements, activities and programs.

**This monthly newsletter and our monthly calendar are always posted on our web site
(www.ChildrensLighthouse.com/BulverdeRoad).**

Main Telephone

Number: 210-494-9200

Backline Telephone

**Numbers: 830-980-6940
830-980-6941**

General Email Inbox:

BulverdeRoad@ChildrensLighthouse.com

Additional Resources to stay informed about activity announcements and reminders:



LIKE us on facebook

Children's Lighthouse – 25473 Bulverde Road, San Antonio



Follow us on Instagram

Our Handle is: [@clclbulverderoad](https://www.instagram.com/clclbulverderoad)

Experience the Lighthouse Difference

THE LIGHTHOUSE NEWS BEACON



**25473 Bulverde Road
San Antonio, TX 78261**

**Summer Camp is for our elementary
school students.**

**We are now enrolling for
Summer Camp!**

To reserve a place for your child, turn in your Summer
Camp Enrollment Form or speak with a member of the
front office staff. –

Space is limited!

THE LIGHTHOUSE NEWS BEACON

Continuous Enrollment Annual
Curriculum Fee Letters out to Parents
3/30/36



Join us for our

Fiesta Shoebox Parade

Friday, April 17, 2026

at

10:30 am



Schoolwide Spring Pictures

By

Caitlyn's Creations

Thursday, April 9, 2026 - Rooms 1-5 &

Siblings

and

Friday, April 10, 2026 – Room 6-9

THE LIGHTHOUSE NEWS BEACON

APRIL 2026 DATES TO REMEMBER

3/30/26 - Continuous Enrollment and 2026 – 2027 Annual Curriculum Fee Forms go home to parents

4/3/26 – Last day to turn in Continuous Enrollment Form for **25% Discount off of 2026 – 2027 Annual Curriculum Fee**

4/9/26 - Spring Pictures – Rooms 1 – 5 & Siblings at 9:00 am

**4/10/26 – Spring Pictures – Rooms 6 – 9 at 9:00 am
– Last day to turn in Continuous Enrollment Form for **20% Discount** off of 2026 – 2027 Annual Curriculum Fee**

4/17/26 – – **Fiesta Shoebox Parade @ 10:30 am
- Last day to turn in Continuous Enrollment Form for **15% Discount** off of 2026 – 2027 Annual Curriculum Fee**

4/24/26 – Last day to turn in Continuous Enrollment Form for **10% Discount off of 2026 – 2027 Annual Curriculum Fee
– NEISD and COMAL ISD Schools CLOSED**

4/30/26 – Graduation Pictures – Rooms 8 & 9

THE LIGHTHOUSE NEWS BEACON

2026 Summer Camp Information for Parents For Elementary School Aged Students

- **Summer Camp is for our Elementary School Aged Students**
- **Comal ISD is Thursday May 21, 2026**
- **Last day of school for NEISD is Friday May 29, 2026**
- **Full day of care available for Comal ISD students on Friday May 22, 2026 - +\$45**
- **First day of Summer Camp is Tuesday May 26, 2026**
- **Summer Camp Kit Fee includes fees for all field trips and camp T-shirt – Summer Camp Kit Fee is \$300**
- **Full-time Program: Monday – Friday (5 days) - Weekly Tuition is \$290**
- **Part-time Program: Tuesday – Thursday (3 days) – Weekly Tuition is \$210**
- **NEISD last day of Summer Camp is Thursday August 13, 2026**
- **Center closed for Back to School preparation Friday August 14, 2026**
- **NEISD first day of school is Monday August 17, 2026**
- **Comal ISD last day of Summer Camp is Friday August 21, 2026**
- **Comal first day of school is Tuesday August 25, 2026**
- **Full day of care available for Comal ISD students on Monday August 24, 2026 if enrolled in our Before/ After School Program - +\$45**

THE LIGHTHOUSE NEWS BEACON

Pre-K Graduation Pictures
for
Rooms 8 & 9
Thursday, April 30, 2026



Pre-K Graduation

Friday, May 15, 2026

10:00 am to 11:00 am

**Reception in Room 10
Immediately Following
Graduation**

THE LIGHTHOUSE NEWS BEACON

MAY 2026 DATES TO REMEMBER

5/1/26 – Summer Camp Sign Up Continues – Room 10

5/4/26 – Spring Assessments go home to parents this week

5/8/26 – Mother's Day creations sent home to celebrate

5/12/26 – Parent – Teacher Conferences – Day 1

5/13/26 – Parent – Teacher Conferences – Day 2

5/14/26 – Parent – Teacher Conferences – Day 3

5/15/26 – Pre-K Graduation!! 10:00 am to 11:00 am

5/21/26 – Comal ISD Last Day of School

5/29/26 – NEISD Last Day of School

5/25/26 – NEISD and COMAL ISD Schools CLOSED

5/25/26 – Center CLOSED

THE LIGHTHOUSE NEWS BEACON

Parent Referral Program

Help us spread the word about Children's Lighthouse – Bulverde Road and earn FREE tuition!

When you refer family, friends, neighbors, or co-workers to our Center, you will be credited a free week of tuition for your oldest child after the referred family has enrolled and attended our center for four (4) consecutive weeks!

Thank you for your continued support of our Center. We appreciate our families.

Discounted Annual Curriculum Fees & Continuous Enrollment

In April we look forward and begin planning for the 2026 – 2027 School Year.

To prepare, we ask parents to complete a Continuous Enrollment Form and pay a discounted Annual Curriculum Fee for the upcoming school year. We appreciate you helping us in the planning and preparation and offer discounted Annual Curriculum Fees. The discounts are as follows, if the Annual Curriculum Fee is paid the 1st week of April we offer a 25% discount, the 2nd week we offer a 20% discount, the 3rd week we offer a 15% discount, and the 4th week we offer a 10% discount.

Open enrollment for new families begins May 1, 2026. Annual Curriculum Fees will be full price May 2, 2026.

Experience the Lighthouse Difference

THE LIGHTHOUSE NEWS BEACON

COGNIA Certification & Texas Rising Star (TRS) Accreditation

In 2025 our Center is prepared for and earned a 4 Star certification from Texas Rising Star which is the high accreditation level! The TRS certification shows that our center exceeds minimum standards and provides the highest quality early learning child care.

Our 2026 goal is to achieve the national certification for curriculum and operations called COGNIA. We just received word that we have been accepted as a COGNIA certification candidate!

New Enrollment Forms

The State of Texas Child Care Licensing Division requires that we have the most up to date family information on file. We will be sending home new Enrollment Forms to be completed with the most current information.

Please complete the forms as quickly as possible and return them to a member of the front office.

Toys from Home

We are discouraging children bringing toys from home. If a child does bring a toy from home we are asking parents to either 1. Bring the toy back to the car, or 2. Place the toy in the child's cubbie where it will remain until pick up.

... We have had several toys from home coming in to the building and they toy gets broken, lost or causes a distraction.

...We do have Show and Tell on occasion where Toys/ items from home are permitted.

MISPLACED ITEMS

We have had incidents of "temporarily misplaced" belongings recently. These things happen occasionally, we do our best to locate the items and get them back to whom they belong as quickly as possible. It really helps if parents label all their child's belongings: clothing (jackets, sweaters, hats, etc.), blankets, and "lovey" toys. backpacks, bags, and car seats.

THE LIGHTHOUSE NEWS BEACON

Current Illness Policy:

Most medical professionals consider a fever to be 100.4. If your child has a fever at or above 100.4, please seek medical attention. Please keep them home.

We have a NO temperature policy at our school. If your child has ANY fever, they will be sent home and must be picked up within the hour. The child must remain out of the school for 24 hours and be fever free without the use of fever reducing medication for 24 hours before they can return.

If your child is absent or has been sent home due to illness with, fever, cough, or contagious illness (Covid, Hand Foot & Mouth/ RSV, Strep, etc.), a doctor's note with a date that the child may return to school is required

Going into the fall and winter season if a child is diagnosed with a contagious illness, household members /siblings are strongly encouraged to stay at home to reduce the spread of germs to others.

A doctor's note is always required for children to return to school after a contagious illness (COVID, Flu, Strep, RSV, Hand Foot & Mouth, Pink Eye, etc.).

The children are taught to sneeze into their elbow, wipe/blow their noses often, as well as maintaining frequent hand washing. We do this in addition to our cleaning/ sanitizing/ disinfecting protocol to help reduce the spread of illness.

Hand washing is the best way to reduce the spread of illness. We are diligent about handwashing procedures.

THE LIGHTHOUSE NEWS BEACON

2026 Center Closings

Our Center is closed on

January 1, 2026 (<i>Thursday</i>)	New Year's Day
January 19, 2026 (<i>Monday</i>)	Martin Luther King Day
February 16, 2026 (<i>Monday</i>)	In Service Day for Teacher Training
April 3, 2026 (<i>Friday</i>)	Good Friday
April 6, 2026 (<i>Monday</i>)	Easter Monday
May 25, 2026 (<i>Monday</i>)	Memorial Day
July 3, 2026 (<i>Friday</i>)	Independence Day
August 14, 2026 (<i>Friday</i>)	In Service Day for Teacher Training
September 7, 2026 (<i>Monday</i>)	Labor Day
October 12, 2026 (<i>Monday</i>)	In Service Day for Teacher Training
November 26, 2026 (<i>Thursday</i>)	Thanksgiving Day
November 27, 2026 (<i>Friday</i>)	Day after Thanksgiving
December 24, 2026 (<i>Thursday</i>)	Christmas Eve Day
December 25, 2026 (<i>Friday</i>)	Christmas Day
December 31, 2026 (<i>Thursday</i>)	New Year's Eve Day
January 1, 2027 (<i>Friday</i>)	New Year's Day

HOURS OF OPERATION ARE: 6:30 PM to 6:30 PM
Latest Pick up is 6:15 PM

LATE PICK UP FEES ARE ASSESSED PER CHILD:
\$20.00 Minimum & an additional \$2.00 per minute after 6:40 PM



Experience the Lighthouse Difference

THE LIGHTHOUSE NEWS BEACON

Happy Fiesta!

&

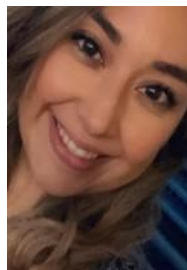
Happy
Graduation



Ms. Angie



Ms. Veronica



Ms. Katie



Ms. Kio



Ms. Bhagi



Experience the Lighthouse Difference