

THE LIGHTHOUSE NEWS BEACON

CHILDREN'S LIGHTHOUSE LEARNING CENTER
EDUCATIONAL DAY CARE WITH A PURPOSE



CHILDREN'S LIGHTHOUSE STAFF

Angie O'Connor
Owner & Director

Katie Gonzales
Co-Director

Kio Rodriguez
Curriculum Coordinator &
Education Coach

Sarrah Jury
TRS Coordinator & Closing
Manager

Helene VanCleave
Kitchen Manager



Texas 
Rising Star

We did it!
4 STARS!!!!

We achieved a 4 star rating for our Texas Rising Star (TRS) certification. This is the highest rating available. For the last fourteen (14) months we have worked very hard preparing for the Alamo Workforce TRS assessment and certification process by bolstering our classrooms and providing top-notch training for our teachers.

Child care and early learning programs that achieve Texas Rising Star certification, offering quality care that exceeds the Texas Health and Human Services Commission (HHSC) Child Care Regulation (CCR) minimum standards, are in a better position to positively affect the physical, social-emotional, and cognitive development of children. As programs advance through the levels of Texas Rising Star certification, they are increasingly able to positively affect the development of the children they serve daily.

CHILDREN'S LIGHTHOUSE LEARNING CENTER

25473 Bulverde Road
San Antonio, TX 78261
210.494.9200 / 830.980.6940 / 830.980.6941
BulverdeRoad@ChildrensLighthouse.com
www.ChildrensLighthouse.com/BulverdeRoad

THE LIGHTHOUSE NEWS BEACON

In addition, we have had a mentoring partnership with United Way. United Way provides "Quality Coaches" visits to classrooms a few times a month. The Quality Coaches worked with our teachers side by side in their classrooms modeling best practices during the visit. Quality Coaches also provided direction regarding the administrative documents ready for TRS assessment.

Our goal is to provide the best quality care for our students. We appreciate you entrusting us with your children's early learning education. Thank you.

Summer Camp

We are enjoying a beautiful summer this year. Our Summer Camp program has been amazing! The campers are looking forward to the upcoming field trips.

Some of the places our Campers will be going are: the Zoo, Natural Bridge Caverns, Clay Casa and the drive through Safari.

New Neighbor

You may have noticed that we have a new neighbor. Friday evening and weekend mornings there is a Food Truck and Farmer's Market in the empty lot next to the Center.

Bring the family and check it out!

Experience the Lighthouse Difference

THE LIGHTHOUSE NEWS BEACON

KEEPING INFORMED AND IN TOUCH

We have a large number of families in our group now, we have several methods of communication to keep information flowing so all our families are well informed of announcements, activities and programs.

This monthly newsletter and our monthly calendar are always posted on our web site
(www.ChildrensLighthouse.com/BulverdeRoad).

**Main Telephone
Number:** 210-494-9200

**Backline Telephone
Numbers:** 830-980-6940
830-980-6941

General Email Inbox:
BulverdeRoad@ChildrensLighthouse.com

**Additional Resources to stay informed about activity
announcements and reminders:**



LIKE us on facebook

**Children's Lighthouse – 25473 Bulverde Road, San
Antonio**



Follow us on Instagram

Our Handle is: @clclbulverderoad

Experience the Lighthouse Difference

THE LIGHTHOUSE NEWS BEACON

2025 Summer Camp Information for Parents For Elementary School Aged Students

- **Summer Camp is for our Elementary School Aged Students**
- **First day of Summer Camp is Tuesday May 27, 2025**
- **Summer Camp Kit Fee includes fees for all field trips and camp T-shirt – Summer Camp Kit Fee is \$300**
- **Full-time Program: Monday – Friday (5 days) - Weekly Tuition is \$280**
- **Part-time Program: Tuesday – Thursday (3 days) – Weekly Tuition is \$210**
- **NEISD last day of Summer Camp is Thursday August 7, 2025**
- **Center closed for Back to School preparation Friday August 8, 2025**
- **NEISD first day of school is Monday August 11, 2025**
- **Comal ISD last day of Summer Camp is Friday August 15, 2025**
- **Comal ISD - first day of school is Tuesday August 19, 2025**
- **Full day of care available for Comal ISD students on Monday August 18, 2025 if enrolled in our Before/ After School Program - +\$45**

THE LIGHTHOUSE NEWS BEACON

2024 Tax Statements Were Emailed

The 2024 Tax Statements were prepared and sent out via email January 10, 2025 at 9:37 am. Please save the email or print the Tax Statements for your records.

We will have duplicates available, but there will be a \$5.00 fee for a copy.

Parent Referral Program

Help us spread the word about Children's Lighthouse – Bulverde Road and earn FREE tuition!

When you refer family, friends, neighbors, or co-workers to our Center, you will be credited a free week of tuition for your oldest child after the referred family has enrolled and attended our center for four (4) consecutive weeks!

Thank you for your continued support of our Center. We appreciate our families.

Discounted Annual Curriculum Fees & Continuous Enrollment

In April we looked forward and began planning for the 2025 – 2026 School Year.

We appreciate you helping us in the planning and preparation and offered discounted Annual Curriculum Fees. The discounts were as follows, if the Annual Curriculum Fee was paid the 1st week of April we offered a 25% discount, the 2nd week we offered a 20% discount, the 3rd week we offered a 15% discount, and the 4th week we offered a 10% discount.

Open enrollment for new families began May 1, 2025. Annual Curriculum Fees are full price after April 28, 2025.

Curriculum Fees are annual supply fees. The 2025 – 2026 Curriculum Fees are for the period August 2025 to August 2026

Experience the Lighthouse Difference

THE LIGHTHOUSE NEWS BEACON

Sunscreen and Bug Spray

While we are thankful for the rain that has fallen this year, it has brought an abundance of mosquitos to the area. Please bring in sunscreen and bug spray for your children. Teachers will apply before the children go outside for recess.

The State of Texas Child Care Licensing Division requires that we have signed permission forms before we can apply either sunscreen or bug spray. You can obtain a form from the front office if needed.

Closed Toe Shoes

We would like all the students to wear closed toe shoes. The mulch in our playground gets stuck in sandals and crocs.

Toys from Home

We are discouraging children bringing toys from home. If a child does bring a toy from home, we are asking parents to either 1. Bring the toy back to the car, or 2. Place the toy in the child's cubbie where it will remain until pick up.

... We have had several toys from home coming in to the building and they toy gets broken, lost or causes a distraction.

...We do have Show and Tell on occasion where Toys/ items from home are permitted.

MISPLACED ITEMS

We have had incidents of "temporarily misplaced" belongings recently.

These things happen occasionally, we do our best to locate the items and get them back to whom they belong as quickly as possible. It really

helps if parents label all their child's belongings: clothing (jackets, sweaters, hats, etc.), blankets, and "lovey" toys. backpacks, bags, and car seats.

THE LIGHTHOUSE NEWS BEACON

Current Illness Policy:

Most medical professionals consider a fever to be 100.4. If your child has a fever at or above 100.4, please seek medical attention. Please keep them home.

We have a NO temperature policy at our school. If your child has ANY fever, they will be sent home and must be picked up within the hour. The child must remain out of the school for 24 hours and be fever free without the use of fever reducing medication for 24 hours before they can return.

If your child is absent or has been sent home due to illness with, fever, cough, or contagious illness (Covid, Hand Foot & Mouth/ RSV, Strep, etc.), a doctor's note with a date that the child may return to school is required

Going into the 2024 fall and winter season if a child is diagnosed with a contagious illness, household members /siblings are strongly encouraged to stay at home to reduce the spread of germs to others.

A doctor's note is always required for children to return to school after a contagious illness (COVID, Flu, Strep, RSV, Hand Foot & Mouth, Pink Eye, etc.).

The children are taught to sneeze into their elbow, wipe/blow their noses often, as well as maintaining frequent hand washing. We do this in addition to our cleaning/ sanitizing/ disinfecting protocol to help reduce the spread of illness.

Hand washing is the best way to reduce the spread of illness. We are diligent about handwashing procedures.

THE LIGHTHOUSE NEWS BEACON

2025 Center Closings

Our Center is closed on

December 24, 2024 (<i>Tuesday</i>)	Christmas Eve Day
December 25, 2024 (<i>Wednesday</i>)	Christmas Day
December 31, 2024 (<i>Tuesday</i>)	New Year's Eve Day
January 1, 2025 (<i>Wednesday</i>)	New Year's Day
February 17, 2025 (<i>Monday</i>)	In Service Day for Teacher Training
April 21, 2025 (<i>Monday</i>)	Easter Monday
May 26, 2025 (<i>Monday</i>)	Memorial Day
June 19, 2025	We are open Juneteen
July 4, 2025 (<i>Friday</i>)	Independence Day
August 8, 2025 (<i>Friday</i>)	In Service Day for Teacher Training
September 1, 2025 (<i>Monday</i>)	Labor Day
October 13, 2025 (<i>Monday</i>)	In Service Day for Teacher Training
November 27, 2025 (<i>Thursday</i>)	Thanksgiving Day
November 28, 2025 (<i>Friday</i>)	Day after Thanksgiving
December 24, 2025 (<i>Wednesday</i>)	Christmas Eve Day
December 25, 2025 (<i>Thursday</i>)	Christmas Day
December 31, 2025 (<i>Wednesday</i>)	New Year's Eve Day
January 1, 2026 (<i>Thursday</i>)	New Year's Day

HOURS OF OPERATION ARE: 6:30 AM to 6:30 PM
Latest Pick up is 6:15 PM

LATE PICK UP FEES ARE ASSESSED PER CHILD:
\$20.00 Minimum & an additional \$2.00 per minute after 6:40 PM

Experience the Lighthouse Difference

JUNE / JULY 2025

VOLUME #13 ISSUE #6/7

THE LIGHTHOUSE NEWS BEACON

Ms. Angie



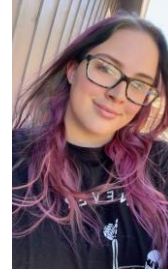
Ms. Katie



Ms. Kio



Ms. Sarrah



Experience the Lighthouse Difference