

# THE LIGHTHOUSE NEWS BEACON

CHILDREN'S LIGHTHOUSE LEARNING CENTER  
EDUCATIONAL DAY CARE WITH A PURPOSE



## CHILDREN'S LIGHTHOUSE Front Office Staff

**Angie O'Connor**  
Owner & Director

**Katie Gonzales**  
Co Director

**Heidi Holloway**  
Opening & Safety Manager

**Kiomarie Rodriguez**  
Curriculum Coordinator &  
Education Coach

**Sarrah Jury**  
TRS Coordinator & Closing  
Manager



♥ *Happy Valentine's Day* ♥



### Let's Rodeo San Antonio!

February 6 through 23, 2025 is the San Antonio Stock and Rodeo Show! To celebrate and get in the rodeo spirit, we have Dress Like A Cowgirl/ Cowboy Day on Friday, February 7.

Remember... a cowgirl/cowboy costume is the best ranch dressing!

## CHILDREN'S LIGHTHOUSE LEARNING CENTER

25473 Bulverde Road  
San Antonio, TX 78261  
210.494.9200 / 830.980.6940

InfoBulverdeRoad@ChildrensLighthouse.com  
www.ChildrensLighthouse.com/BulverdeRoad

# THE LIGHTHOUSE NEWS BEACON

## ♥ Congratulations ♥

Ms. Heidi – 6 year  
Work Anniversary



Ms. Yahaira – 10 year  
Work Anniversary



Ms. Veronica – 1 year  
Work Anniversary



Thank you for all you do!



## Valentine's Day Class Parties

**Friday, February 14, 2025 3:00 pm to 4:00 pm**

**Sign up for party treats will be in each classroom.**

**If your child does not normally attend school on Fridays or is not normally here past 2:00 pm, please know your child is welcome to join the party. Please call in advance to let us know if your child will be participate from 3:00pm to 4:00pm.**

**The children will exchange Valentine's Day cards. Please bring UNADDRESSED Valentine's Day Cards for each child in class. Email will be sent with the number of children in your child's classroom.**



**The Center will be closed Monday  
February 17, 2025  
for  
Teacher In-Service Training**



# THE LIGHTHOUSE NEWS BEACON

## ♥ *Welcome* ♥

We welcome our  
new families and teachers  
to the  
Children's Lighthouse  
Family!



## **HAPPY ST. PATTY'S DAY**



### **Dr. Seuss Parade**

We celebrate Read Across America by celebrating Dr. Seuss' birthday on February 3, 2025.

This month, the classrooms read a variety of Dr. Seuss books. The classes make costumes and parade through the center!



### **Monday March 17, 2025 is Dress In Green Day**



## **SPRING BREAK 2025**

***If you need care for you school aged child,  
we are available***

- **NEISD - March 10- 14, 2025**
- **Comal ISD - March 17 -21, 2025**

***Please let a member of the Front Office know if your child will be in attendance. We will provide daily or weekly prices.***

***If your child will not be in attendance, let us know so that we can apply one (1) of your five (5) weeks of Absentee Credit.***



# THE LIGHTHOUSE NEWS BEACON

## 2024 Tax Statements Were Emailed

The 2024 Tax Statements were prepared and sent out via email January 10, 2025 at 9:37 am. Please save the email or print the Tax Statements for your records.

We will have duplicates available, but there will be a \$5.00 fee for a copy.

## Parent Referral Program

Help us spread the word about Children's Lighthouse – Bulverde Road and earn FREE tuition!

When you refer family, friends, neighbors, or co-workers to our Center, you will be credited a free week of tuition for your oldest child after the referred family has enrolled and attended our center for four (4) consecutive weeks!

Thank you for your continued support of our Center. We appreciate our families.

## Discounted Annual Curriculum Fees & Continuous Enrollment

In April we look forward and begin planning for the 2025 – 2026 School Year.

To prepare, we ask parents to complete a Continuous Enrollment Form and pay a discounted Annual Curriculum Fee for the upcoming school year. We appreciate you helping us in the planning and preparation and offer discounted Annual Curriculum Fees. The discounts are as follows, if the Annual Curriculum Fee is paid the 1st week of April we offer a 25% discount, the 2nd week we offer a 20% discount, the 3rd week we offer a 15% discount, and the 4th week we offer a 10% discount.

Open enrollment for new families begins May 1, 2025. Annual Curriculum Fees will be full price April 28, 2025.

*Experience the Lighthouse Difference*

# THE LIGHTHOUSE NEWS BEACON

## WINTER ASSESSMENTS

The teachers completed Winter Assessments. Parents will receive them the second week of February 2025. Parent Teacher Conferences will be February 18, 19, & 20.

Spring Assessments will also begin and those completed Assessments will go home to parents in May.

## New Enrollment Forms

The State of Texas Child Care Licensing Division requires that we have the most up to date family information on file. We will be sending home new Enrollment Forms with Winter Assessment.

Please complete the forms with the most current information as quickly as possible and return them to a member of the front office.

## Mid-Year Move Ups

Because of the way some of the children's birthdays fall, we do mid-year move ups. This will take place the last week of February 2025. Only parents who have children that will be making a mid-year

## Move Ups

Because of the way some of the children's birthdays fall, we do mid-year move ups. This will take place the last week of February 2025.

Parents of children that will be moving up mid-year will be notified by a member of the Front Office staff.

## OUTDOOR PLAY

We take advantage of nice weather when we can. We watch the air quality index and air temperature.

The weather is getting colder. As everyone is wearing extra layers, please label your child's belongings to avoid mix ups....clothing/ jacket/ sweater/ etc.

# THE LIGHTHOUSE NEWS BEACON

## ♥ CALENDAR ♣

FEB 6 to 23 – SAN ANTONIO RODEO  
 FEB 7 – DRESS LIKE A COWGIRL/  
 COWBOY DAY  
 FEB 10 – WINTER ASSESSMENTS &  
 UPDATE TO ENROLLMENT  
 FORMS OUT TO PARENTS  
 FEB 14 – VALENTINE'S DAY PARTIES  
 3:00 PM– 4:00 PM &  
 COMAL ISD CLOSED  
 FEB 17 – CENTER CLOSED FOR IN-  
 SERVICE TRAINING &  
 COMAL SCHOOLS CLOSED &  
 NEISD SCHOOLS CLOSED  
 FEB 18, 19 & 20 WINTER  
 ASSESSMENTS – PARENT  
 TEACHER CONFERENCES

MAR 3 - DR. SEUSS' BIRTHDAY/  
 READ ACROSS AMERICA  
 CELEBRATION & PARADE  
 MAR 7 – EARLY RELEASE NEISD  
 MAR 10 - MAR 14– SPRING BREAK  
 FOR NEISD  
 MAR 17 – WEAR GREEN FOR ST.  
 PATTY'S DAY  
 MAR 17 - MAR 21– SPRING BREAK  
 FOR COMAL ISD  
 MAR 24 - MAR 28– SCHOLASTIC  
 BOOK FAIR

## KEEPING INFORMED AND IN TOUCH

We have a large number of families in our group now, we have several methods of communication to keep information flowing so all our families are well informed of announcements, activities and programs.

This monthly newsletter and our monthly calendar are always posted on our web site ([www.ChildrensLighthouse.com/BulverdeRoad](http://www.ChildrensLighthouse.com/BulverdeRoad)).

### Main Telephone

Number: 210-494-9200

### Backline Telephone

Numbers: 830-980-6940  
830-980-6941

### General Email Inbox:

[BulverdeRoad@ChildrensLighthouse.com](mailto:BulverdeRoad@ChildrensLighthouse.com)

Additional Resources to stay informed about activity announcements and reminders:



LIKE us on facebook

Children's Lighthouse – 25473 Bulverde Road, San Antonio



Follow us on Instagram

Our Handle is: @clclbulverderoad

*Experience the Lighthouse Difference*

# THE LIGHTHOUSE NEWS BEACON

## ENRICHMENT CLASSES Spring 2025

MONDAY

Nothing Scheduled

TUESDAY



**SOCCKER SHOTS**

Visit website for enrollment and payment  
[www.socckershots.org](http://www.socckershots.org)

WEDNESDAY

Nothing Scheduled

THURSDAY



**TEAMS OF TOMORROW**

Visit website for enrollment and payment

FRIDAY



**MY GYM**

Visit website for enrollment and payment

# THE LIGHTHOUSE NEWS BEACON

## Drop Off and Pick Up Policies

### DROP OFF CUT OFF TIME

Circle Time at our Center is at 9:00 AM. We strongly encourage all students are present and in class by 8:55 AM so they are able to participate in Circle Time and not arriving during Circle Time. Circle Time initiates the learning portion of our day.

To ensure that the children are present for key learning concepts and to maximize early learning concepts, we are initiating a Drop Off Cut Off Time . Children must arrive to school no later than 9:30 AM unless previous notification has been given for doctor's appointment, etc.

...To provide notice of a late arrival, please send an email to our General Inbox: [BulverdeRoad@ChildrensLighthouse.com](mailto:BulverdeRoad@ChildrensLighthouse.com).

### PICK UP TIME

Our latest pick up time is 6:15 PM. Late pick up fees begin at 6:30 PM. The late pick up fee is \$2.00 a minute with a \$20.00 minimum.

### NO CALL/ NO PICK UP FOR AFTER SCHOOLERS

... If your after schooler is absent from elementary school or is picked up early due to illness or doctor's appointment, parents must notify us that they will not be present /on our bus that afternoon. It is our policy that our school buses do not leave the school until all children are accounted for. If a child is not present for bus run and we have not been notified, our driver will contact the front office and a member of the front office will reach out to the child's parents to account for their whereabouts. Our bus drivers are not permitted to leave the school until a member of the front office has spoken to one of the child's parents to confirm they are accounted for.

The No Call/ No Pick Up Fee is \$20.00 per child.



# THE LIGHTHOUSE NEWS BEACON

## Texas Rising Star (TRS) Certification

Our Center is preparing for a certification from Texas Rising Star. Part of this process is a mentoring partnership with United Way. United Way provides Quality Coaches visits to classrooms a few times a month. The Quality Coach works with teachers side by side in their classroom modeling best practices during the visit. Quality Coaches also provide direction regarding the administrative documents ready for TRS assessment.

Our objective is to reach goals for certification before the end of the year. The TRS certification shows that our center exceeds minimum standards and provides the highest quality early learning child care.

## New Enrollment Forms

The State of Texas Child Care Licensing Division requires that we have the most up to date family information on file. We will be sending home new Enrollment Forms to be completed with the most current information.

Please complete the forms as quickly as possible and return them to a member of the front office.

## Toys from Home

We are discouraging children bringing toys from home. If a child does bring a toy from home we are asking parents to either 1. Bring the toy back to the car, or 2. Place the toy in the child's cubbie where it will remain until pick up.

... We have had several toys from home coming in to the building and they get broken, lost or causes a distraction.

... We do have Show and Tell on occasion where Toys/ items from home are permitted.

## MISPLACED ITEMS

We have had incidents of "temporarily misplaced" belongings recently. These things happen occasionally, we do our best to locate the items and get them back to whom they belong as quickly as possible. It really helps if parents label all their child's belongings: clothing (jackets, sweaters, hats, etc.), blankets, and "lovey" toys. backpacks, bags, and car seats.

# THE LIGHTHOUSE NEWS BEACON

## Current Illness Policy:

Most medical professionals consider a fever to be 100.4. If your child has a fever at or above 100.4, please seek medical attention. Please keep them home.

We have a NO temperature policy at our school. If your child has ANY fever, they will be sent home and must be picked up within the hour. The child must remain out of the school for 24 hours and be fever free without the use of fever reducing medication for 24 hours before they can return.

If your child is absent or has been sent home due to illness with, fever, cough, or contagious illness (Covid, Hand Foot & Mouth/ RSV, Strep, etc.), a doctor's note with a date that the child may return to school is required

Going into the 2024 fall and winter season if a child is diagnosed with a contagious illness, household members /siblings are strongly encouraged to stay at home to reduce the spread of germs to others.

A doctor's note is always required for children to return to school after a contagious illness (COVID, Flu, Strep, RSV, Hand Foot & Mouth, Pink Eye, etc.).



The children are taught to sneeze into their elbow, wipe/ blow their noses often, as well as maintaining frequent hand washing. We do this in addition to our cleaning/ sanitizing/ disinfecting protocol to help reduce the spread of illness.

Hand washing is the best way to reduce the spread of illness. We are diligent about handwashing procedures.

# THE LIGHTHOUSE NEWS BEACON

## 2025 Center Closings

*Our Center is closed on*

December 24, 2024 ( <i>Tuesday</i> )	Christmas Eve Day
December 25, 2024 ( <i>Wednesday</i> )	Christmas Day
December 31, 2024 ( <i>Tuesday</i> )	New Year's Eve Day
January 1, 2025 ( <i>Wednesday</i> )	New Year's Day
February 17, 2025 ( <i>Monday</i> )	In Service Day for Teacher Training
April 21, 2025 ( <i>Monday</i> )	Easter Monday
May 26, 2025 ( <i>Monday</i> )	Memorial Day
June 19, 2025 ( <i>Thursday</i> )	Juneteenth
July 4, 2025 ( <i>Friday</i> )	Independence Day
August 8, 2025 ( <i>Friday</i> )	In Service Day for Teacher Training
September 1, 2025 ( <i>Monday</i> )	Labor Day
October 13, 2025 ( <i>Monday</i> )	In Service Day for Teacher Training
November 27, 2025 ( <i>Thursday</i> )	Thanksgiving Day
November 28, 2025 ( <i>Friday</i> )	Day after Thanksgiving
December 24, 2025 ( <i>Wednesday</i> )	Christmas Eve Day
December 25, 2025 ( <i>Thursday</i> )	Christmas Day
December 31, 2025 ( <i>Wednesday</i> )	New Year's Eve Day
January 1, 2026 ( <i>Thursday</i> )	New Year's Day

**HOURS OF OPERATION ARE: 6:30 PM to 6:30 PM**  
Latest Pick up is 6:15 PM

**LATE PICK UP FEES ARE ASSESSED PER CHILD:**  
\$20.00 Minimum & an additional \$2.00 per minute after 6:40 PM

# THE LIGHTHOUSE NEWS BEACON



and



Ms. Angie



Ms. Katie



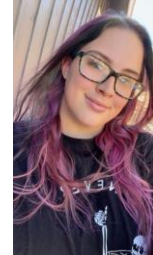
Ms. Heidi



Ms. Kio



Ms. Sarrah



*Experience the Lighthouse Difference*