

THE LIGHTHOUSE NEWS BEACON

CHILDREN'S LIGHTHOUSE LEARNING CENTER
EDUCATIONAL DAY CARE WITH A PURPOSE



CHILDREN'S LIGHTHOUSE STAFF

Angie O'Connor
Owner & Director, Administration

Veronica Villalobos
Morning Director

Katie Gonzales
Afternoon Director

Kiomarie Rodriguez
Curriculum Coordinator &
Education Coach

Bhargavi Ashokkrishnan
Closing Manager



Merry Christmas



HAPPY HOLIDAYS



Happy New Year!



BOTH COMAL ISD & NEISD SCHOOLS
will be closed for two weeks for Winter Break
Week of Dec 22, 2025 to Dec 26, 2025

and

Week of Dec 29, 2025 to Jan 2, 2026

And

Mon Jan 5, 2026

FULL DAY CARE IS AVAILABLE FOR
OUR ENROLLED SCHOOL AGERS (Room 9 & 10 Students)
Please see / call the office staff for pricing details.



CHILDREN'S LIGHTHOUSE
LEARNING CENTER

25473 Bulverde Road
San Antonio, TX 78261
210.494.9200 / 830.980.6940

BulverdeRoad@ChildrensLighthouse.com
www.ChildrensLighthouse.com/BulverdeRoad

THE LIGHTHOUSE NEWS BEACON

ANNOUNCEMENTS

Thurs 11/27/25 & Fri 11/28/25
Center Closed for Thanksgiving

Mon 12/1/25
Jingles, our Elf on the Shelf,
Returns

Wed 12/3/25
Return Salvation Army
Angel Tree Gifts

Mon 12/8/25
Pictures with Santa

Wed 12/24/25 & Thurs 12/25/25
Center Closed for Christmas

Wed 12/31/25 & Thurs 1/1/26
Center Closed for New Years

Mon 12/22/25 through Mon 1/5/26

NEISD & Comal ISD Schools
Closed

Mon 1/19/26
Center Closed

NEISD & Comal ISD Schools
Closed

Wed 1/28/26 & Thurs 1/29/26
NEISD Schools – Early Release

KEEPING INFORMED AND IN TOUCH

Because we have a large number of families in our group now, we have several methods of communication to keep information flowing so all our families are well informed of announcements, activities and programs.

This monthly newsletter and our monthly calendar are always posted on our web site (www.ChildrensLighthouse.com/BulverdeRoad).

Additional Resources to stay informed about activity announcements and reminders:



LIKE us on facebook

Children's Lighthouse – 25473 Bulverde Road, San Antonio



Follow us on Instagram

Our Handle is: @clclbulverderoad



**** GENERAL INBOX EMAIL ADDRESS ****

BulverdeRoad@ChildrensLighthouse.com

Experience the Lighthouse Difference

THE LIGHTHOUSE NEWS BEACON

MONDAY

No Enrichment Class

STRETCH-N-GROW

Visit website for enrollment and payment
www.stretch-n-grow.com

TUESDAY



SOCCKER SHOTS

Visit website for enrollment and payment
www.socckershots.org

WEDNESDAY

No Enrichment Class



TEAMS OF TOMORROW

Visit website for enrollment and payment
www.teamsoftomorrow.com

FRIDAY



TIPPY TOES DANCE

Visit website for enrollment and payment
www.tippytoesdance.com

Experience the Lighthouse Difference

THE LIGHTHOUSE NEWS BEACON

NEW FACES

You may notice several new faces around the center... we have many new families enroll this month. Welcome!

With the increasing enrollment, we also have many new staff members. Welcome to you as well.

PARENT REFERRAL PROGRAM

Help us spread the word about Children's Lighthouse – Bulverde Road and earn FREE tuition!

When you refer family, friends, neighbors, or co-workers to our Center, you will be credited a free week of tuition for your oldest child after the referred family has enrolled and attended our center for four (4) consecutive weeks!

Thank you for your continued support of our Center. We appreciate our families!

OUTDOOR PLAY

We take advantage of nice weather when we can.

We watch the air quality index and air temperature. If conditions are too hot or air quality is not good, the children will not go outside.

NO SANDALS

Children are to wear closed toe shoes while at school. No sandals.

UPDATE MEDICINE POLICY

We are only administering doctor prescribed medication to children.

The times we administer medications are 11:30 AM and 3:30 PM.

Please arrange your child's medication schedule to align with our timeframe.

Further, we are no longer able to administer any medication, OTC or prescribed, unless we have a doctor's note with explicit directions for administration of the medication. All medication MUST be in it's original packaging. If prescribed, RX must be on the packaging.

THE LIGHTHOUSE NEWS BEACON



Pictures with Santa!

Monday December 8, 2025

6:40 PM to 8:00 PM

Parents, bring your cameras as you capture the memories.

To participate, please bring nonperishable food items to donate to
Provisions Food Bank Bulverde, Texas



Milk and Cookies Holiday Class Parties

Thursday, December 18, 2025

3:00 PM to 4:00 PM

THE LIGHTHOUSE NEWS BEACON

New and Updated Drop Off and Pick Up Policies

DROP OFF CUT OFF TIME

Circle Time at our Center is at 9:00 AM. We strongly encourage all students are present and in class by 8:55 AM so they are able to participate in Circle Time and not arriving during Circle Time. Circle Time initiates the learning portion of our day.

To ensure that the children are present for key learning concepts and to maximize early learning concepts, we are initiating a Drop Off Cut Off Time . Children must arrive to school no later than 9:30 AM unless previous notification has been given for doctor's appointment, etc.

...To provide notice of a late arrival, please send an email to our General Inbox: BulverdeRoad@ChildrensLighthouse.com.

Children cannot be dropped off just before or during nap time. Nap time is 12:00 pm to 2:00 pm.

PICK UP TIME

Our latest pick up time is 6:15 PM. Late pick up fees begin at 6:30 PM. The late pick up fee is \$2.00 a minute with a \$20.00 minimum.

NO CALL/ NO PICK UP FOR AFTER SCHOOLERS

... If your after-schooler is absent from elementary school or is picked up early due to illness or doctor's appointment, parents must notify us that they will not be present /on our bus that afternoon. It is our policy that our school buses do not leave the school until all children are accounted for. If a child is not present for bus run and we have not been notified, our driver will contact the front office and a member of the front office will reach out to the child's parents to account for their whereabouts. Our bus drivers are not permitted to leave the school until a member of the front office has spoken to one of the child's parents to confirm they are accounted for.

The No Call/ No Pick Up Fee is \$20.00 per child.

THE LIGHTHOUSE NEWS BEACON

Texas Rising Star (TRS) Certification



Congratulations to us! We are a TRS Four Star Center!!

Toys from Home

We are discouraging children bringing toys from home. If a child does bring a toy from home we are asking parents to either 1. Bring the toy back to the car, or 2. Place the toy in the child's cubbie where it will remain until pick up.

... We have had several toys from home coming in to the building and they toy gets broken, lost or causes a distraction.

...We do have Show and Tell on occasion where Toys/ items from home are permitted.

MISPLACED ITEMS

We have had incidents of "temporarily misplaced" belongings recently. These things happen occasionally, we do our best to locate the items and get them back to whom they belong as quickly as possible. It really helps if parents label all their child's belongings: clothing (jackets, sweaters, hats, etc.), blankets, and "lovey" toys. backpacks, bags, and car seats.

Experience the Lighthouse Difference

THE LIGHTHOUSE NEWS BEACON

Current Illness Policy:

Most medical professionals consider a fever to be 100.4. If your child has a fever at or above 100.4, please seek medical attention. Please keep them home.

We have a NO temperature policy at our school. If your child has ANY fever, they will be sent home and must be picked up within the hour. The child must remain out of the school for 24 hours and be fever free without the use of fever reducing medication for 24 hours before they can return.

If your child is absent or has been sent home due to illness with, fever, cough, or contagious illness (Covid, Hand Foot & Mouth/ RSV, Strep, etc.), a doctor's note with a date that the child may return to school is required

Going into the 2025 fall and winter season if a child is diagnosed with a contagious illness, household members /siblings are strongly encouraged to stay at home to reduce the spread of germs to others.

A doctor's note is always required for children to return to school after a contagious illness (COVID, Flu, Strep, RSV, Hand Foot & Mouth, Pink Eye, etc.).

*** ● *** ● *** ● ***

The children are taught to sneeze into their elbow, wipe/ blow their noses often, as well as maintaining frequent hand washing. We do this in addition to our cleaning/ sanitizing/ disinfecting protocol to help reduce the spread of illness.

Hand washing is the best way to reduce the spread of illness. We are diligent about handwashing procedures.

Experience the Lighthouse Difference

THE LIGHTHOUSE NEWS BEACON



The hijinx begins the week after Thanksgiving when Jingles, our Elf on the Shelf, returns to our Center!



ANGEL TREE

Return unwrapped Angel Tree Gifts

AND

Angel Tree Tags

By 12/3/25

Experience the Lighthouse Difference

THE LIGHTHOUSE NEWS BEACON

ANNOUNCEMENTS

We have
changed our
late pick up fees

2026 Center Closings

Our Center is closed on

December 24, 2025 (<i>Wednesday</i>)	Christmas Eve Day
December 25, 2025 (<i>Thursday</i>)	Christmas Day
December 31, 2025 (<i>Wednesday</i>)	New Year's Eve Day
January 1, 2026 (<i>Thursday</i>)	New Year's Day
January 19, 2026 (<i>Monday</i>)	Martin Luther King Day
February 16, 2026 (<i>Monday</i>)	In Service Day for Teacher Training
April 3, 2026 (<i>Friday</i>)	Good Friday
April 6, 2026 (<i>Monday</i>)	Easter Monday
May 25, 2026 (<i>Monday</i>)	Memorial Day
July 3, 2026 (<i>Friday</i>)	Independence Day
August 14, 2026 (<i>Friday</i>)	In Service Day for Teacher Training
September 7, 2026 (<i>Monday</i>)	Labor Day
October 12, 2026 (<i>Monday</i>)	In Service Day for Teacher Training
November 26, 2026 (<i>Thursday</i>)	Thanksgiving Day
November 27, 2026 (<i>Friday</i>)	Day after Thanksgiving
December 24, 2026 (<i>Thursday</i>)	Christmas Eve Day
December 25, 2026 (<i>Friday</i>)	Christmas Day
December 31, 2026 (<i>Thursday</i>)	New Year's Eve Day
January 1, 2027 (<i>Friday</i>)	New Year's Day

HOURS OF OPERATION ARE: 6:30 PM to 6:30 PM
Latest Pick up is 6:15 PM

LATE PICK UP FEES ARE ASSESSED PER CHILD:

Experience the Lighthouse Difference

THE LIGHTHOUSE NEWS BEACON

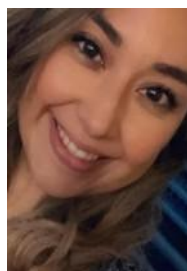
*Merry Christmas
&
Happy New Year*



Ms. Angie



Ms. Veronica



Ms. Katie



Ms. Kio



Ms. Bhagi



Experience the Lighthouse Difference