

THE LIGHTHOUSE NEWS BEACON

CHILDREN'S LIGHTHOUSE LEARNING CENTER
EDUCATIONAL DAY CARE WITH A PURPOSE



CHILDREN'S LIGHTHOUSE STAFF

Angie O'Connor

Owner & Director

Katie Gonzales

Co-Director

Heidi Holloway

Opening & Safety Manager

Kio Rodriguez

Curriculum Coordinator &
Education Coach

Sarah Jury

TRS Coordinator & Closing
Manager

Helene VanCleave

Kitchen Manager



In March we enjoyed Spring Break and the Scholastic Book Fair!

April is Spring Pictures, our Annual Egg Hunt and Fiesta Shoe Box Parade!

Spring has sprung and is in full swing. Spring Pictures are in April. Easter falls in the month of April this year, so we have our Annual Egg Hunt. Our students study the life cycle of butterflies. We also have our Annual Fiesta Shoe Box Parade!

May is Graduation Pictures, Mother's Day, Spring Assessments, and Pre-K Graduation,!

In May we have our Pre-K graduation pictures at the beginning of the month. We celebrate Mother's Day. Spring Assessments come out mid-month. And we celebrate Pre-K Graduation!!

CHILDREN'S LIGHTHOUSE LEARNING CENTER

25473 Bulverde Road
San Antonio, TX 78261
210.494.9200 / 830.980.6940 / 830.980.6941

BulverdeRoad@ChildrensLighthouse.com
www.ChildrensLighthouse.com/BulverdeRoad

THE LIGHTHOUSE NEWS BEACON

KEEPING INFORMED AND IN TOUCH

We have a large number of families in our group now, we have several methods of communication to keep information flowing so all our families are well informed of announcements, activities and programs.

This monthly newsletter and our monthly calendar are always posted on our web site (www.ChildrensLighthouse.com/BulverdeRoad).

Main Telephone

Number: 210-494-9200

Backline Telephone

Numbers: 830-980-6940
830-980-6941

General Email Inbox:

BulverdeRoad@ChildrensLighthouse.com

Additional Resources to stay informed about activity announcements and reminders:



LIKE us on facebook

Children's Lighthouse – 25473 Bulverde Road, San Antonio



Follow us on Instagram

Our Handle is: @clclbulverderoad

Experience the Lighthouse Difference

THE LIGHTHOUSE NEWS BEACON

Retirement Announcement!

It is with mixed emotions that we announce the retirement of Ms. Heidi, effective May 2. Since joining us in January 2019, Ms. Heidi has been a warm and welcoming presence for families, and has played a vital role in the daily operations of our center. Her dedication, hard work, and kindness will be greatly missed by all.

We thank Ms. Heidi for her years of service and wish her all the best in this exciting new chapter. Please join us in celebrating her contributions and wishing her a happy and fulfilling retirement



12th Annual Spring Egg Hunt

Saturday, April 12, 2025

10:30 AM

Reception and Retirement Celebration Immediately Following



**25473 Bulverde Road
San Antonio, TX 78261**

Overflow Parking at Church Next Door

Bring Your Own Basket!

Call/ Email/ Add your child's name to the Sign Up Sheet at Front Desk to reserve a place for your child –

Space is limited!

210-494-9200 / 830-980-6940

BulverdeRoad@ChildrensLighthouse.com

**Take Pictures with the Bunny,
Parents bring your cameras!**

THE LIGHTHOUSE NEWS BEACON

CONGRATULATIONS

Congratulations and Thank You to Ms. Yahaira (aka Ms. Hida). In February Ms. Yahaira celebrated her 10 year work with Children's Lighthouse! Thank you for all you do!



Continuous Enrollment Annual Curriculum Fee Letters out to Parents
3/27/25 & 3/28/25

~~~~~\*~~~~~

**Join us for our**

**Fiesta Shoebox Parade**

**Friday, April 25, 2025**

**at**

**10:30 am**

~~~~~\*~~~~~

Schoolwide Spring Pictures

By

Caitlyn's Creations

Thursday, April 10, 2025 - Rooms 1-5 &

Siblings

and

Friday, April 11, 2025 – Room 6-9

THE LIGHTHOUSE NEWS BEACON

APRIL 2025 DATES TO REMEMBER

3/27/25 - Continuous Enrollment and 2025 – 2025 Annual Curriculum Fee Forms go home to parents

4/4/25 – Last day to turn in Continuous Enrollment Form for **25% Discount off of 2025 – 2026 Annual Curriculum Fee**

4/10/25 - Spring Pictures – Rooms 1 – 5 & Siblings at 9:00 am

**4/11/25 – Spring Pictures – Rooms 6 – 9 at 9:00 am
– Last day to turn in Continuous Enrollment Form for **20% Discount** off of 2025 – 2026 Annual Curriculum Fee**

4/12/25 – Annual Egg Hunt at 10:30 am

4/18/25 – Last day to turn in Continuous Enrollment Form for **15% Discount off of 2025 – 2026 Annual Curriculum Fee
– NEISD and COMAL ISD Schools CLOSED**

4/21/25 – Center CLOSED

4/25/25 – Last day to turn in Continuous Enrollment Form for **10% Discount off of 2025 – 2026 Annual Curriculum Fee
– **Fiesta Shoebox Parade @ 10:30 am****

THE LIGHTHOUSE NEWS BEACON

2025 Summer Camp Information for Parents For Elementary School Aged Students

- **Summer Camp is for our Elementary School Aged Students**
- **Last day of school for both NEISD and Comal ISD is Thursday May 22, 2025**
- **Full day of care available for Comal ISD students on Friday May 23, 2025 - +\$45**
- **First day of Summer Camp is Tuesday May 27, 2025**
- **Summer Camp Kit Fee includes fees for all field trips and camp T-shirt – Summer Camp Kit Fee is \$300**
- **Full-time Program: Monday – Friday (5 days) - Weekly Tuition is \$280**
- **Part-time Program: Tuesday – Thursday (3 days) – Weekly Tuition is \$210**
- **NEISD last day of Summer Camp is Thursday August 7, 2025**
- **Center closed for Back to School preparation Friday August 8, 2025**
- **NEISD first day of school is Monday August 11, 2025**
- **Comal ISD last day of Summer Camp is Friday August 15, 2025**
- **Comal first day of school is Tuesday August 19, 2025**
- **Full day of care available for Comal ISD students on Monday August 18, 2025 if enrolled in our Before/ After School Program - +\$45**

THE LIGHTHOUSE NEWS BEACON

Pre-K Graduation Pictures
for
Rooms 8 & 9
Thursday, May 1, 2025



Pre-K Graduation

Friday, May 16, 2025

10:00 am to 11:00 am

**Reception in Room 10
Immediately Following
Graduation**

THE LIGHTHOUSE NEWS BEACON

MAY 2025 DATES TO REMEMBER

**5/1/25 – Graduation Pictures – Rooms 8 & 9
– Summer Camp Sign Up Begins – Room 10**

**5/2/25 – Graduation Pictures – Make ups
– NEISD and Comal ISD Schools CLOSED**

5/5/25 – Spring Assessments go home to parents this week

5/9/25 – Mother’s Day Celebration

5/13/25 – Parent – Teacher Conferences – Day 1

5/14/25 – Parent – Teacher Conferences – Day 2

5/15/25 – Parent – Teacher Conferences – Day 3

5/16/25 – Pre-K Graduation!! 10:00 am to 11:00 am

5/22/25 – NEISD and Comal ISD Last Day of School

5/23/25 – NEISD and COMAL ISD Schools CLOSED

5/26/25 – Center CLOSED

5/27/25 – Week 1 of Summer Camp

THE LIGHTHOUSE NEWS BEACON

2024 Tax Statements Were Emailed

The 2024 Tax Statements were prepared and sent out via email January 10, 2025 at 9:37 am. Please save the email or print the Tax Statements for your records.

We will have duplicates available, but there will be a \$5.00 fee for a copy.

Parent Referral Program

Help us spread the word about Children's Lighthouse – Bulverde Road and earn FREE tuition!

When you refer family, friends, neighbors, or co-workers to our Center, you will be credited a free week of tuition for your oldest child after the referred family has enrolled and attended our center for four (4) consecutive weeks!

Thank you for your continued support of our Center. We appreciate our families.

Discounted Annual Curriculum Fees & Continuous Enrollment

In April we look forward and begin planning for the 2025 – 2026 School Year.

To prepare, we ask parents to complete a Continuous Enrollment Form and pay a discounted Annual Curriculum Fee for the upcoming school year. We appreciate you helping us in the planning and preparation and offer discounted Annual Curriculum Fees. The discounts are as follows, if the Annual Curriculum Fee is paid the 1st week of April we offer a 25% discount, the 2nd week we offer a 20% discount, the 3rd week we offer a 15% discount, and the 4th week we offer a 10% discount.

Open enrollment for new families begins May 1, 2025. Annual Curriculum Fees will be full price April 28, 2025.

Experience the Lighthouse Difference

THE LIGHTHOUSE NEWS BEACON

Texas Rising Star (TRS) Certification/ Accreditation

Our Center is preparing for a certification from Texas Rising Star which is a national accreditation! The TRS certification shows that our center exceeds minimum standards and provides the highest quality early learning child care.

We have been working hard preparing for this certification. For the past year, we have had a mentoring partnership with United Way. United Way provides Quality Coaches visits to classrooms a few times a month. The Quality Coach works with teachers side by side in their classroom modeling best practices during the visit. Quality Coaches also provide direction regarding the administrative documents ready for TRS assessment.

Our certification review is scheduled for June 2025!!

New Enrollment Forms

The State of Texas Child Care Licensing Division requires that we have the most up to date family information on file. We will be sending home new Enrollment Forms to be completed with the most current information.

Please complete the forms as quickly as possible and return them to a member of the front office.

Toys from Home

We are discouraging children bringing toys from home. If a child does bring a toy from home we are asking parents to either 1. Bring the toy back to the car, or 2. Place the toy in the child's cubbie where it will remain until pick up.

... We have had several toys from home coming in to the building and they toy gets broken, lost or causes a distraction.

...We do have Show and Tell on occasion where Toys/ items from home are permitted.

MISPLACED ITEMS

We have had incidents of "temporarily misplaced" belongings recently.

These things happen occasionally, we do our best to locate the items and get them back to whom they belong as quickly as possible. It really

helps if parents label all their child's belongings: clothing (jackets, sweaters, hats, etc.), blankets, and "lovey" toys. backpacks, bags, and

THE LIGHTHOUSE NEWS BEACON

Current Illness Policy:

Most medical professionals consider a fever to be 100.4. If your child has a fever at or above 100.4, please seek medical attention. Please keep them home.

We have a **NO** temperature policy at our school. If your child has **ANY** fever, they will be sent home and must be picked up within the hour. The child must remain out of the school for 24 hours and be fever free without the use of fever reducing medication for 24 hours before they can return.

If your child is absent or has been sent home due to illness with, fever, cough, or contagious illness (Covid, Hand Foot & Mouth/ RSV, Strep, etc.), a doctor's note with a date that the child may return to school is required

Going into the 2024 fall and winter season if a child is diagnosed with a contagious illness, household members /siblings are strongly encouraged to stay at home to reduce the spread of germs to others.

A doctor's note is always required for children to return to school after a contagious illness (COVID, Flu, Strep, RSV, Hand Foot & Mouth, Pink Eye, etc.).

The children are taught to sneeze into their elbow, wipe/ blow their noses often, as well as maintaining frequent hand washing. We do this in addition to our cleaning/ sanitizing/ disinfecting protocol to help reduce the spread of illness.

Hand washing is the best way to reduce the spread of illness. We are diligent about handwashing procedures.

THE LIGHTHOUSE NEWS BEACON

2025 Center Closings

Our Center is closed on

| | |
|--|--|
| December 24, 2024 (<i>Tuesday</i>) | Christmas Eve Day |
| December 25, 2024 (<i>Wednesday</i>) | Christmas Day |
| December 31, 2024 (<i>Tuesday</i>) | New Year's Eve Day |
| January 1, 2025 (<i>Wednesday</i>) | New Year's Day |
| February 17, 2025 (<i>Monday</i>) | In Service Day for
Teacher Training |
| April 21, 2025 (<i>Monday</i>) | Easter Monday |
| May 26, 2025 (<i>Monday</i>) | Memorial Day |
| June 19, 2025 (<i>Thursday</i>) | Juneteenth |
| July 4, 2025 (<i>Friday</i>) | Independence Day |
| August 8, 2025 (<i>Friday</i>) | In Service Day for
Teacher Training |
| September 1, 2025 (<i>Monday</i>) | Labor Day |
| October 13, 2025 (<i>Monday</i>) | In Service Day for
Teacher Training |
| November 27, 2025 (<i>Thursday</i>) | Thanksgiving Day |
| November 28, 2025 (<i>Friday</i>) | Day after Thanksgiving |
| December 24, 2025 (<i>Wednesday</i>) | Christmas Eve Day |
| December 25, 2025 (<i>Thursday</i>) | Christmas Day |
| December 31, 2025 (<i>Wednesday</i>) | New Year's Eve Day |
| January 1, 2026 (<i>Thursday</i>) | New Year's Day |

HOURS OF OPERATION ARE: 6:30 AM to 6:30 PM
Latest Pick up is 6:15 PM

LATE PICK UP FEES ARE ASSESSED PER CHILD:
\$20.00 Minimum & an additional \$2.00 per minute after 6:40 PM

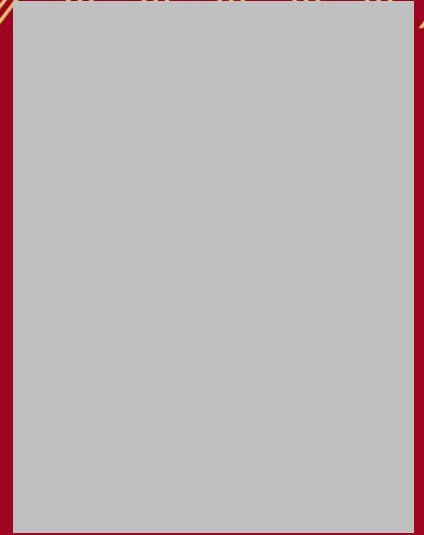
Experience the Lighthouse Difference

THE LIGHTHOUSE NEWS BEACON

Happy Fiesta!

&

Happy
Graduation



Ms. Angie



Ms. Katie



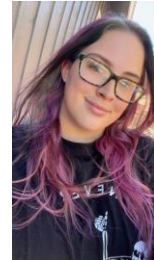
Ms. Heidi



Ms. Kio



Ms. Sarrah



Experience the Lighthouse Difference