

THE LIGHTHOUSE NEWS BEACON

CHILDREN'S LIGHTHOUSE LEARNING CENTER
EDUCATIONAL DAY CARE WITH A PURPOSE



CHILDREN'S LIGHTHOUSE STAFF

Angie O'Connor
Owner & Director

Katie Gonzales
Assistant Director

Heidi Holloway
Opening & Safety Manager

Kiomarie Rodriguez
Curriculum Coordinator &
Education Coach

Sarrah Jury
TRS Coordinator & Closing
Manager



October and November are busy months at our Center!

We celebrate the ghoulish season with our Annual Trunk n Treat Event. Parents sign up to participate by bringing candy (nut free and store bought) and decorate the trunk of their vehicles to prepare for our classrooms of Trunk n Treaters.

We will have a "Look Book", Sign Up Sheet, and more details at the front desk the week before Halloween.

Our Scholastic Book Fair takes place the week of November 18 - 22!

Thanksgiving week is a short week (Monday - Wednesday) as we are closed Thursday and Friday so our staff can celebrate the holiday with their families.

We do provide care for the school age children as the elementary schools are closed this holiday week. Holiday Tuition Prices will be announced at the beginning of November.

We will also host our Thanksgiving Luncheon 11/21/24!

Jingles, our Elf on the Shelf, usually makes his appearance over the Thanksgiving Weekend... let the hyjinx begin!

We will again participate in The Salvation Army Angel Tree Program, please consider participating by adopting an Angel from our Angel Tree to help everyone have a wonderful Christmas.

CHILDREN'S LIGHTHOUSE LEARNING CENTER

25473 Bulverde Road
San Antonio, TX 78261
210.494.9200 / 830.980.6940

BulverdeRoad@ChildrensLighthouse.com
www.ChildrensLighthouse.com/BulverdeRoad

THE LIGHTHOUSE NEWS BEACON

ANNOUNCEMENTS

10/31/24 Trunk n Treat
10:00 am

Volunteers/ Participants arrive at
9:45 am to set up

11/18/24 to 11/22/24 -
Scholastic Book Fair

11/18/24 to 12/2/24
Salvation Army Angel Tree

11/21/24
Annual Thanksgiving Luncheon

11/28/24 & 11/29/24
Center Closed for Thanksgiving

11/30/24
Jingles, our Elf on the Shelf,
Returns

KEEPING INFORMED AND IN TOUCH

Because we have a large number of families in our group now, we have several methods of communication to keep information flowing so all our families are well informed of announcements, activities and programs.

This monthly newsletter and our monthly calendar are always posted on our web site (www.ChildrensLighthouse.com/BulverdeRoad).

Additional Resources to stay informed about activity announcements and reminders:



LIKE us on facebook

Children's Lighthouse – 25473 Bulverde Road, San Antonio



Instagram

Follow us on Instagram

Our Handle is: @clclbulverderoad



**** GENERAL INBOX EMAIL ADDRESS ****

BulverdeRoad@ChildrensLighthouse.com

Experience the Lighthouse Difference

THE LIGHTHOUSE NEWS BEACON

ENRICHMENT CLASSES

Returning late August/ early September 2024

MONDAY



BRICKS, BOTS & BEAKERS

Vist website for enrollment and payment
www.bricksbotsbeakers.com

TUESDAY



SOCCKER SHOTS

Vist website for enrollment and payment
www.socckershots.org

WEDNESDAY



Victory Martial Arts

Vist website for information
www.victoryma.com

THURSDAY



TEAMS OF TOMORROW

Vist website for enrollment and payment
www.teamsoftomorrow.com

FRIDAY



KINDER DANCE

Vist website for enrollment and payment
www.kinderdancealamocity.com

Experience the Lighthouse Difference

THE LIGHTHOUSE NEWS BEACON

NEW FACES

You may notice several new faces around the center... we have many new families enroll this month. Welcome!

With the increasing enrollment, we also have many new staff members. Welcome to you as well.

PARENT REFERRAL PROGRAM

Help us spread the word about Children's Lighthouse – Bulverde Road and earn FREE tuition!

When you refer family, friends, neighbors, or co-workers to our Center, you will be credited a free week of tuition for your oldest child after the referred family has enrolled and attended our center for four (4) consecutive weeks!

Thank you for your continued support of our Center. We appreciate our families!

OUTDOOR PLAY

We take advantage of nice weather when we can.

We watch the air quality index and air temperature. If conditions are too hot or air quality is not good, the children will not go outside.

NO SANDALS

Children are to wear closed toe shoes while at school. No sandals.

UPDATE MEDICINE POLICY

We are only administering doctor prescribed medication to children. The times we administer medications are 11:30 AM and 3:30 PM. Please arrange your child's medication schedule to align with our timeframe.

Further, we are no longer able to administer any medication, OTC or prescribed, unless we have a doctor's note with explicit directions for administration of the medication. All medication MUST be in its original packaging. If prescribed, RX must be on the packaging.

THE LIGHTHOUSE NEWS BEACON

ANNOUNCEMENTS

10/31/24 Trunk n Treat
10:00 am

Volunteers/ Participants
arrive at 9:45 am to set up

11/18/24 to 11/22/24 -
Scholastic Book Fair

11/18/24 to 12/2/24
Salvation Army Angel Tree

11/21/24
Annual Thanksgiving
Luncheon

11/28/24 & 11/29/24
Center Closed for
Thanksgiving

11/30/24
Jingles, our Elf on the Shelf,
Returns



We will have the Bexar Bulverde Fire Department out to the Center to raise fire prevention awareness.

Join Us For
**Trunk
or
Treat**
October 31st



**Our Annual Trunk n Treat Event is scheduled
for 10:00 am October 31st.**

Join us!!

**We enjoy seeing your creativity with decorations. Details
will be posted the week prior.**

THE LIGHTHOUSE NEWS BEACON

New and Updated Drop Off and Pick Up Policies

DROP OFF CUT OFF TIME

Circle Time at our Center is at 9:00 AM. We strongly encourage all students are present and in class by 8:55 AM so they are able to participate in Circle Time and not arriving during Circle Time. Circle Time initiates the learning portion of our day.

To ensure that the children are present for key learning concepts and to maximize early learning concepts, we are initiating a Drop Off Cut Off Time . Children must arrive to school no later than 9:30 AM unless previous notification has been given for doctor's appointment, etc.

...To provide notice of a late arrival, please send an email to our General Inbox: BulverdeRoad@ChildrensLighthouse.com.

PICK UP TIME

Our latest pick up time is 6:15 PM. Late pick up fees begin at 6:30 PM. The late pick up fee is \$2.00 a minute with a \$20.00 minimum.

NO CALL/ NO PICK UP FOR AFTER SCHOOLERS

... If your afterschooler is absent from elementary school or is picked up early due to illness or doctor's appointment, parents must notify us that they will not be present /on our bus that afternoon. It is our policy that our school buses do not leave the school until all children are accounted for. If a child is not present for bus run and we have not been notified, our driver will contact the front office and a member of the front office will reach out to the child's parents to account for their whereabouts. Our bus drivers are not permitted to leave the school until a member of the front office has spoken to one of the child's parents to confirm they are accounted for.

The No Call/ No Pick Up Fee is \$20.00 per child.

THE LIGHTHOUSE NEWS BEACON

Texas Rising Star (TRS) Certification

Our Center is preparing for a certification from Texas Rising Star. Part of this process is a mentoring partnership with United Way. United Way provides Quality Coaches visits to classrooms a few times a month. The Quality Coach works with teachers side by side in their classroom modeling best practices during the visit. Quality Coaches also provide direction regarding the administrative documents ready for TRS assessment.

Our objective is to reach goals for certification before the end of the year. The TRS certification shows that our center exceeds minimum standards and provides the highest quality early learning child care.

New Enrollment Forms

The State of Texas Child Care Licensing Division requires that we have the most up to date family information on file. We will be sending home new Enrollment Forms to be completed with the most current information.

Please complete the forms as quickly as possible and return them to a member of the front office.

Toys from Home

We are discouraging children bringing toys from home. If a child does bring a toy from home we are asking parents to either 1. Bring the toy back to the car, or 2. Place the toy in the child's cubbie where it will remain until pick up.

... We have had several toys from home coming in to the building and they toy gets broken, lost or causes a distraction.

... We do have Show and Tell on occasion where Toys/ items from home are permitted.

MISPLACED ITEMS

We have had incidents of "temporarily misplaced" belongings recently. These things happen occasionally, we do our best to locate the items and get them back to whom they belong as quickly as possible. It really helps if parents label all their child's belongings: clothing (jackets, sweaters, hats, etc.), blankets, and "lovey" toys. backpacks, bags, and car seats.

THE LIGHTHOUSE NEWS BEACON

Current Illness Policy:

Most medical professionals consider a fever to be 100.4. If your child has a fever at or above 100.4, please seek medical attention. Please keep them home.

We have a NO temperature policy at our school. If your child has ANY fever, they will be sent home and must be picked up within the hour. The child must remain out of the school for 24 hours and be fever free without the use of fever reducing medication for 24 hours before they can return.

If your child is absent or has been sent home due to illness with, fever, cough, or contagious illness (Covid, Hand Foot & Mouth/ RSV, Strep, etc.), a doctor's note with a date that the child may return to school is required

Going into the 2024 fall and winter season if a child is diagnosed with a contagious illness, household members /siblings are strongly encouraged to stay at home to reduce the spread of germs to others.

A doctor's note is always required for children to return to school after a contagious illness (COVID, Flu, Strep, RSV, Hand Foot & Mouth, Pink Eye, etc.).

----- ● ----- ● ----- ● ----- ● -----

The children are taught to sneeze into their elbow, wipe/ blow their noses often, as well as maintaining frequent hand washing. We do this in addition to our cleaning/ sanitizing/ disinfecting protocol to help reduce the spread of illness.

Hand washing is the best way to reduce the spread of illness. We are diligent about handwashing procedures.

Experience the Lighthouse Difference

THE LIGHTHOUSE NEWS BEACON

ANNOUNCEMENTS

10/31/24 Trunk n Treat

10:00 am

Volunteers/ Participants
arrive at 9:45 am to set up

11/18/24 to 11/22/24 -

Scholastic Book Fair

11/18/24 to 12/2/24

Salvation Army Angel Tree

11/21/24

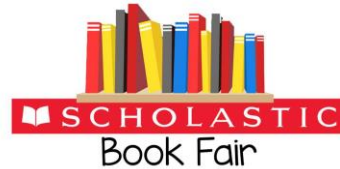
Annual Thanksgiving
Luncheon

11/28/24 & 11/29/24

Center Closed for
Thanksgiving

11/30/24

Jingles, our Elf on the Shelf,
Returns



Week of November 18 - 22, 2024



ANGEL TREE

**Please consider participating by adopting an
Angel from our Angel Tree.**



The hijinx begins the week after Thanksgiving when
Jingles, our Elf on the Shelf, returns to our Center!

Experience the Lighthouse Difference

THE LIGHTHOUSE NEWS BEACON

ANNOUNCEMENTS

We have
changed our
late pick up fees

2024 Center Closings

Our Center is closed on

- January 1, 2024 (*Monday*) New Year's Day
- January 2, 2024 (*Tuesday*) New Year's Day
- February 19, 2024 (*Monday*) In Service Day for Teacher Training
- May 27, 2024 (*Monday*) Memorial Day
- July 4, 2024 (*Thursday*) Independence Day
- July 5, 2024 (*Friday*) Independence Day
- August 9, 2024 (*Friday*) In Service Day for Teacher Training
- September 2, 2024 (*Monday*) Labor Day
- October 14, 2024 (*Monday*) In Service Day for Teacher Training
- November 28, 2024 (*Thursday*) Thanksgiving Day
- November 29, 2024 (*Friday*) Day after Thanksgiving
- December 24, 2024 (*Tuesday*) Christmas Eve Day
- December 25, 2024 (*Wednesday*) Christmas Day
- December 31, 2024 (*Friday*) New Year's Eve Day
- January 1, 2025 (*Wednesday*) New Year's Day

--- ● --- ● --- ● ---
HOURS OF OPERATION ARE: 6:30 PM to 6:30 PM
Latest Pick up is 6:15 PM

LATE PICK UP FEES ARE ASSESSED PER CHILD:
\$20.00 Minimum
and
an additional \$2.00 per minute after 6:40 PM

Experience the Lighthouse Difference

THE LIGHTHOUSE NEWS BEACON

It is Fall!



Ms. Angie



Ms. Katie



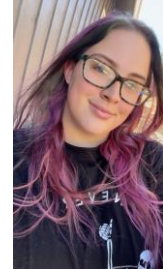
Ms. Heidi



Ms. Kio



Ms. Sarrah



Experience the Lighthouse Difference